

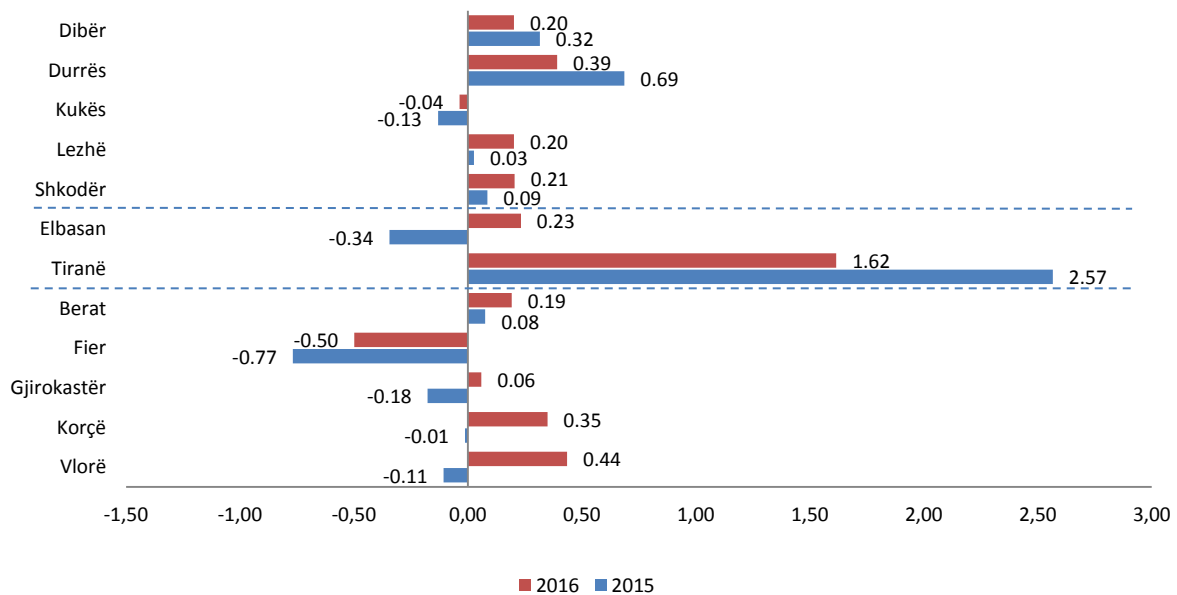
Gross Domestic Product by Statistical Regions NUTS in Albania, year 2016

Tirana, June 18, 2018: In 2016 according to the Statistical Region Level 1 (Albania), GDP at current prices was 1,475,251 million ALL and has increase by 3.35 % compared to the year 2015.

The highest contribution to the real growth rate for 2016 was in Prefecture Tirana with +1.62 p.p. It was followed by Prefecture Vlorë with a contribution to the real growth rate of +0.44 p.p and Prefecture Durrës with a contribution to the real growth rate of +0.39 p.p.

The lowest contribution to the real growth was in Prefecture Fier with -0.50 p.p. It was followed by Prefecture Kukës with a contribution to the real growth rate of -0.04 p.p and Prefecture Gjirokaštër with a contribution to the real growth of +0.06 p.p.

Fig.1 Prefectures Contribution to real Growth Rate of GDP



For Release 18/06/2018

Continue

According to the Statistical Region Level 3, the highest growth rate was registered in Prefecture Vlorë where GDP in real terms has increased by 7.69 %. It was followed by Prefecture Korçë where GDP in real terms has increased by 6.20 % and by Prefecture Dibër where GDP in real terms has increased by 6.19 %.

In 2016 according to the Statistical Region Level 3, the lowest growth rate was registered in Prefecture Fier where GDP in real terms has decreased by 4.22 %. It was followed by Prefecture Kukës where GDP in real terms has decreased by 2.04 %.

Tab. 1 GDP by statistical regions

Code	Statistical Region 2/3	GDP at current prices	GDP at current prices	Real Growth Rate of GDP	Contribution to real Growth	Structure of GDP	Structure of GDP
		(million ALL) 2015*	(million ALL) 2016**	2016**/2015*	2016**/2015*	2015*	2016**
AL	Republic of Albania	1,434,307	1,475,251	3.35	3.35	100.0	100.0
AL01	North	337,996	349,612	4.09	0.96	23.6	23.7
AL011	Dibër	46,850	48,595	6.19	0.20	3.3	3.3
AL012	Durrës	140,260	145,190	4.01	0.39	9.8	9.8
AL013	Kukës	26,008	25,250	-2.04	-0.04	1.8	1.7
AL014	Lezhë	47,513	50,393	6.12	0.20	3.3	3.4
AL015	Shkodër	77,364	80,184	3.81	0.21	5.4	5.4
AL02	Center	675,935	699,198	3.92	1.85	47.1	47.4
AL021	Elbasan	100,200	102,775	3.33	0.23	7.0	7.0
AL022	Tiranë	575,735	596,423	4.03	1.62	40.1	40.4
AL03	South	420,376	426,440	1.84	0.54	29.3	28.9
AL031	Berat	54,691	58,041	5.06	0.19	3.8	3.9
AL032	Fier	169,437	160,941	-4.22	-0.50	11.8	10.9
AL033	Gjirokastër	34,309	34,936	2.49	0.06	2.4	2.4
AL034	Korçë	80,826	85,518	6.20	0.35	5.6	5.8
AL035	Vlorë	81,112	87,005	7.69	0.44	5.7	5.9

*2015 Final data

**2016 Semi-final data

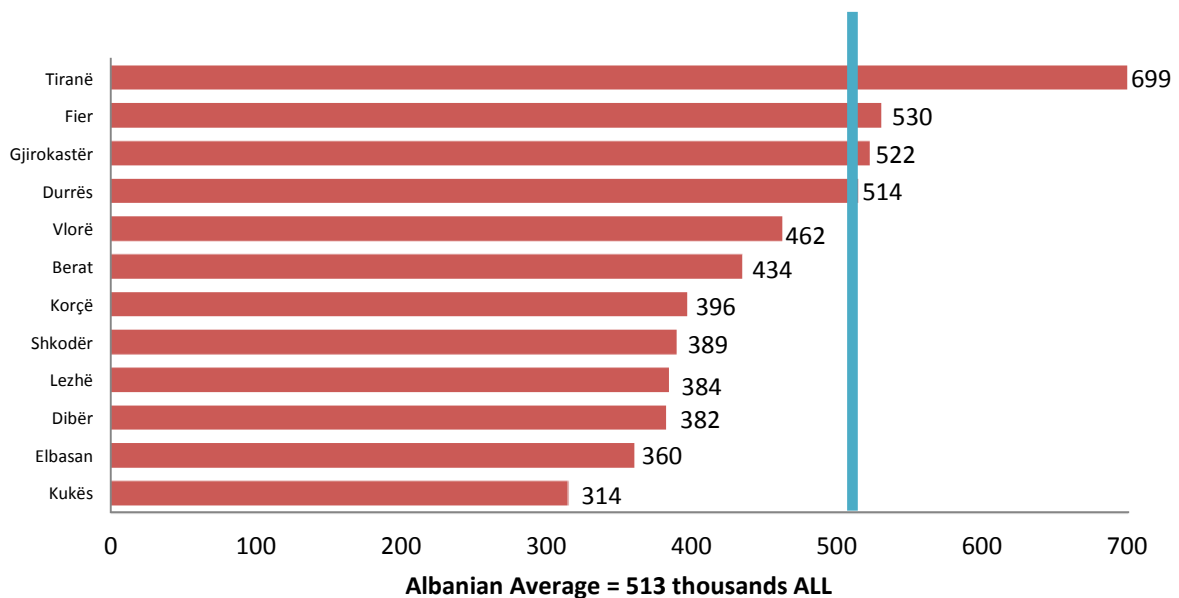
GDP per capita by statistical regions

In 2016 the level of GDP per capita according to Statistical Region Level 1 was around 513 thousand ALL. Compared to year 2015 GDP per capita has increased by 3.0 %.

The highest level of GDP per capita by Statistical Region Level 3 for 2016 was in Prefecture Tiranë with around 669 thousand ALL and has registered a growth with 1.9 % compared with 2015. GDP per capita for Prefecture Tiranë was 36.4 % above the national average. It was followed by Prefecture Fier with around 530 thousand ALL and has registered a decrease with 4.2 % compared with 2015. GDP per capita for Prefecture Fier was 3.3 % above the national average.

GDP per capita for other Prefectures was below the national level, where the lowest was Prefecture Kukës with around 314 thousand ALL and has registered a decrease with 1.2 %, compared with 2015. GDP per capita for Prefecture Kukës was 38.8 % below the national average. After that the lowest GDP per capita was registered in Prefecture Elbasan with around 360 thousand ALL and has registered a increase with 3.8 % compared with 2015. GDP per capita for Prefecture Elbasan was 29.9 % below the national average.

Fig.2 GDP per Capita by Statistical Region Level 3 in 2016 (000/ALL)



Tab. 2 GDP per capita by Statistical Region

Code	Statistical Level 2/3	GDP per capita (ALL)		Index of GDP (%)	Index of GDP (%)
		2015*	2016**	AI=100	AI=100
AL	Republic of Albania	497,902	512,934	100.0	100.0
AL01	North	405,408	421,755	81.4	82.2
AL011	Dibër	360,231	381,681	72.3	74.4
AL012	Durrës	502,551	513,921	100.9	100.2
AL013	Kukës	317,715	313,951	63.8	61.2
AL014	Lezhë	362,568	388,720	72.8	75.8
AL015	Shkodër	365,513	383,569	73.4	74.8
AL02	Center	599,390	614,201	120.4	119.7
AL021	Elbasan	346,548	359,712	69.6	70.1
AL022	Tiranë	686,570	699,475	137.9	136.4
AL03	South	457,288	469,251	91.8	91.5
AL031	Berat	399,485	434,137	80.2	84.6
AL032	Fier	552,703	529,745	111.0	103.3
AL033	Gjirokastër	498,759	521,582	100.2	101.7
AL034	Korçë	369,389	396,148	74.2	77.2
AL035	Vlorë	430,949	461,776	86.6	90.0

*2015 Final data

**2016 Semi-final data

Power Standard (PPS)

GDP for the Republic of Albania expressed in Purchase Power Standards (Purchase Power Parity as price indexes-PPS) in 2016 was 24,468 PPS.

GDP per capita expressed in PPS for Albania for year 2016 is 29.1 % compared with the European Union average per capita (EU28=100) (For more information consult *information for users*). By Statistical Region Level 2 in Statistical Region Center, GDP per capita in PPS for 2016 was 34.9 %, in Statistical Region North 24.0 % and in the Statistical Region South was 26.7 %.

Tab. 3 GDP per capita in PPS (EU28=100)

Code	Statistical Region	GDP per capita in PPS (EU28=100) for 2016
	Albania	29.1
	Statistical Region Level 2	
AL01	North	24.0
AL02	Center	34.9
AL03	South	26.7

Tab. 4 Structure of Gross Value Added by Statistical Regions and by type of activities (Branch=100%), year 2016**

Code	Statistical Level 2/3	Agriculture, Forestry and Fishing	Mining and Quarrying, Manufacturing, Electricity and Water Supply	Construction	Wholesale, Retail Trade, Transportation	Information and communication	Financial activities; Insurance activities	Real Estate Activities	Professional, Scientific and Technical Activities	Public Administration; Education; Health and Social Work Activities	Arts, entertainment and recreation	GVA in current prices
AL	Republic of Albania	100.0	100.0	100.0	100.0	100.0	100.0	100.0	100.0	100.0	100.0	100.0
AL01	North	29.3	29.0	23.6	22.9	15.0	16.3	24.6	12.8	20.8	13.5	23.7
AL011	Dibër	6.2	5.8	1.4	1.4	1.7	1.8	1.5	0.5	3.2	0.8	3.3
AL012	Durrës	7.7	12.6	11.2	13.5	5.2	5.6	13.9	7.8	6.4	5.9	9.8
AL013	Kukës	3.2	1.9	0.8	0.7	1.4	1.3	1.0	0.6	2.3	1.2	1.7
AL014	Lezhë	4.9	2.2	5.7	2.8	1.8	3.5	3.1	1.1	3.3	2.1	3.4
AL015	Shkodër	7.4	6.5	4.5	4.4	4.9	4.1	5.1	2.8	5.6	3.6	5.4
AL02	Center	20.2	41.2	54.1	52.8	71.2	59.8	53.3	77.0	56.8	69.6	47.4
AL021	Elbasan	12.6	7.3	4.6	5.0	4.2	4.9	5.5	2.0	6.6	3.8	7.0
AL022	Tiranë	7.6	33.9	49.5	47.8	67.0	54.9	47.8	75.0	50.2	65.8	40.4
AL03	South	50.5	29.8	22.4	24.4	13.8	23.9	22.1	10.2	22.5	16.9	28.9
AL031	Berat	8.6	3.6	3.0	2.2	2.3	1.9	1.9	0.9	3.2	1.8	3.9
AL032	Fier	21.5	13.5	7.1	8.1	3.3	7.9	6.9	4.7	6.1	3.5	10.9
AL033	Gjirokastrë	3.3	1.9	1.9	2.7	2.1	3.0	1.6	0.7	2.6	1.7	2.4
AL034	Korçë	10.5	3.8	4.2	5.1	3.4	5.4	4.3	1.5	5.5	6.0	5.8
AL035	Vlorë	6.6	7.0	6.0	6.3	2.8	5.6	7.4	2.4	5.1	3.9	5.9

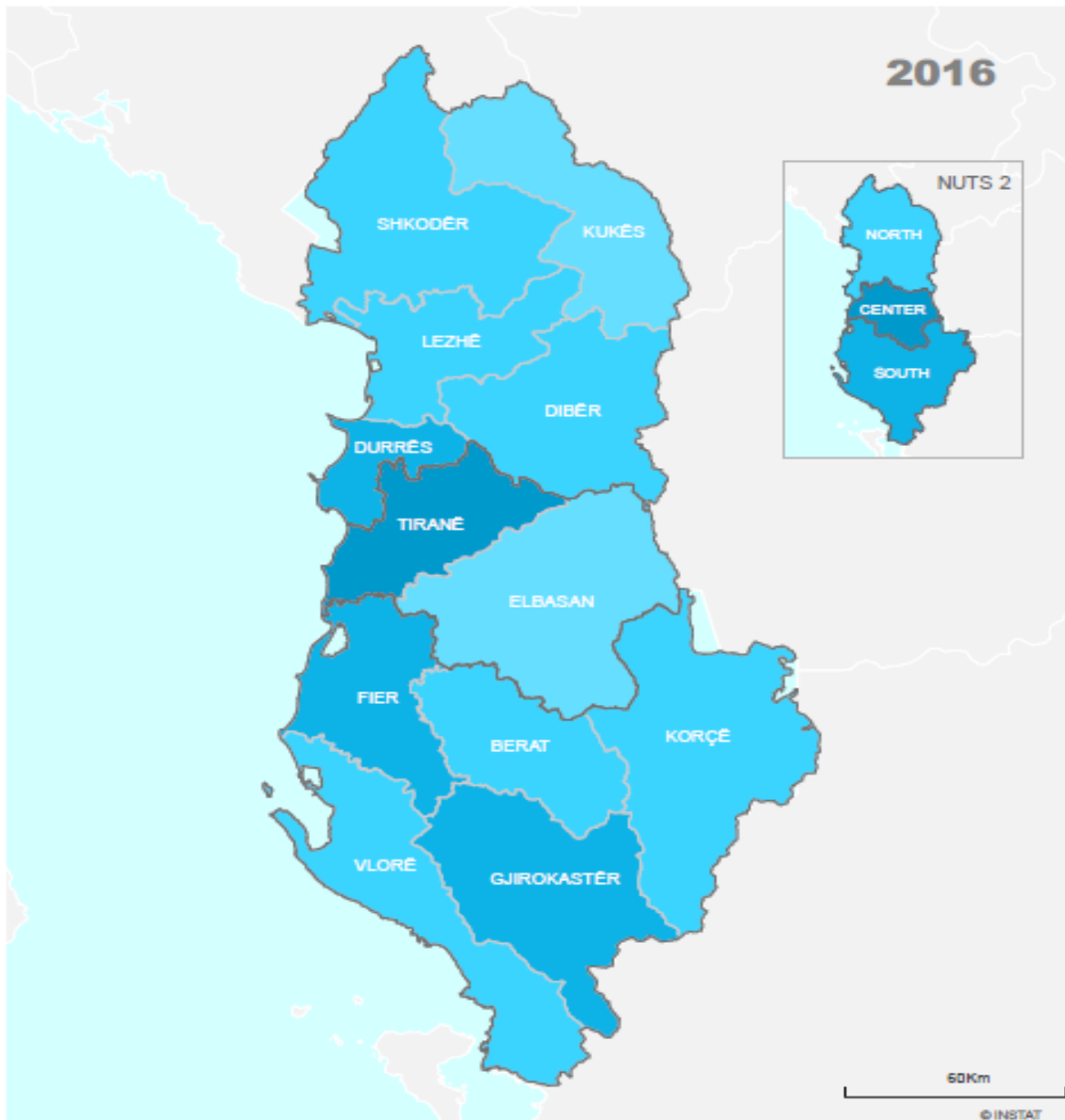
**Estimation for 2016 are based on semi-final data


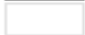
Tab. 5 Structure of Gross Value Added by Statistical Regions and by type of activities (Region=100), year 2016**

Code	Statistical Level 2/3	Agriculture, Forestry and Fishing	Mining and Quarrying, Manufacturing, Electricity and Water Supply	Construction	Wholesale, Retail Trade, Transportation	Information and communication	Financial activities; Insurance activities	Real Estate Activities	Professional, Scientific and Technical Activities	Public Administration; Education; Health and Social Work Activities	Arts, entertainment and recreation	GVA in current prices
AL	Republic of Albania	22.7	13.9	10.2	18.1	3.5	2.8	6.6	6.7	12.5	3.0	100.0
AL01	North	28.1	17.0	10.1	17.5	2.2	1.9	6.9	3.6	10.9	1.7	100.0
AL011	Dibër	42.9	24.7	4.3	7.9	1.8	1.5	3.0	1.1	12.0	0.7	100.0
AL012	Durrës	17.8	17.9	11.6	24.8	1.9	1.6	9.4	5.3	8.1	1.8	100.0
AL013	Kukës	41.9	15.2	4.7	7.9	2.8	2.1	3.9	2.2	17.1	2.0	100.0
AL014	Lezhë	32.3	8.8	17.1	15.1	1.8	2.8	6.0	2.2	12.1	1.8	100.0
AL015	Shkodër	30.8	16.6	8.3	14.6	3.2	2.1	6.2	3.4	12.8	2.0	100.0
AL02	Center	9.7	12.1	11.6	20.2	5.3	3.5	7.5	10.8	15.0	4.4	100.0
AL021	Elbasan	41.0	14.6	6.7	13.1	2.1	1.9	5.2	1.9	11.8	1.6	100.0
AL022	Tiranë	4.3	11.6	12.5	21.4	5.8	3.8	7.8	12.4	15.5	4.9	100.0
AL03	South	39.6	14.3	7.9	15.3	1.7	2.3	5.1	2.4	9.7	1.8	100.0
AL031	Berat	49.6	12.9	7.9	10.1	2.1	1.4	3.1	1.5	10.2	1.4	100.0
AL032	Fier	44.7	17.2	6.7	13.4	1.1	2.0	4.2	2.9	7.0	1.0	100.0
AL033	Gjirokastrër	31.4	10.9	8.4	20.3	3.1	3.5	4.5	1.9	13.9	2.2	100.0
AL034	Korçë	41.1	9.2	7.5	16.0	2.0	2.6	5.0	1.8	11.8	3.1	100.0
AL035	Vlorë	25.5	16.5	10.3	19.4	1.7	2.6	8.4	2.7	10.8	2.0	100.0





**Estimation for 2016 are based on semi-final data

Fig.3 GDP per Capita by Regions



 NUTS 2
 Prefecture

GDP per capita in thousand ALL

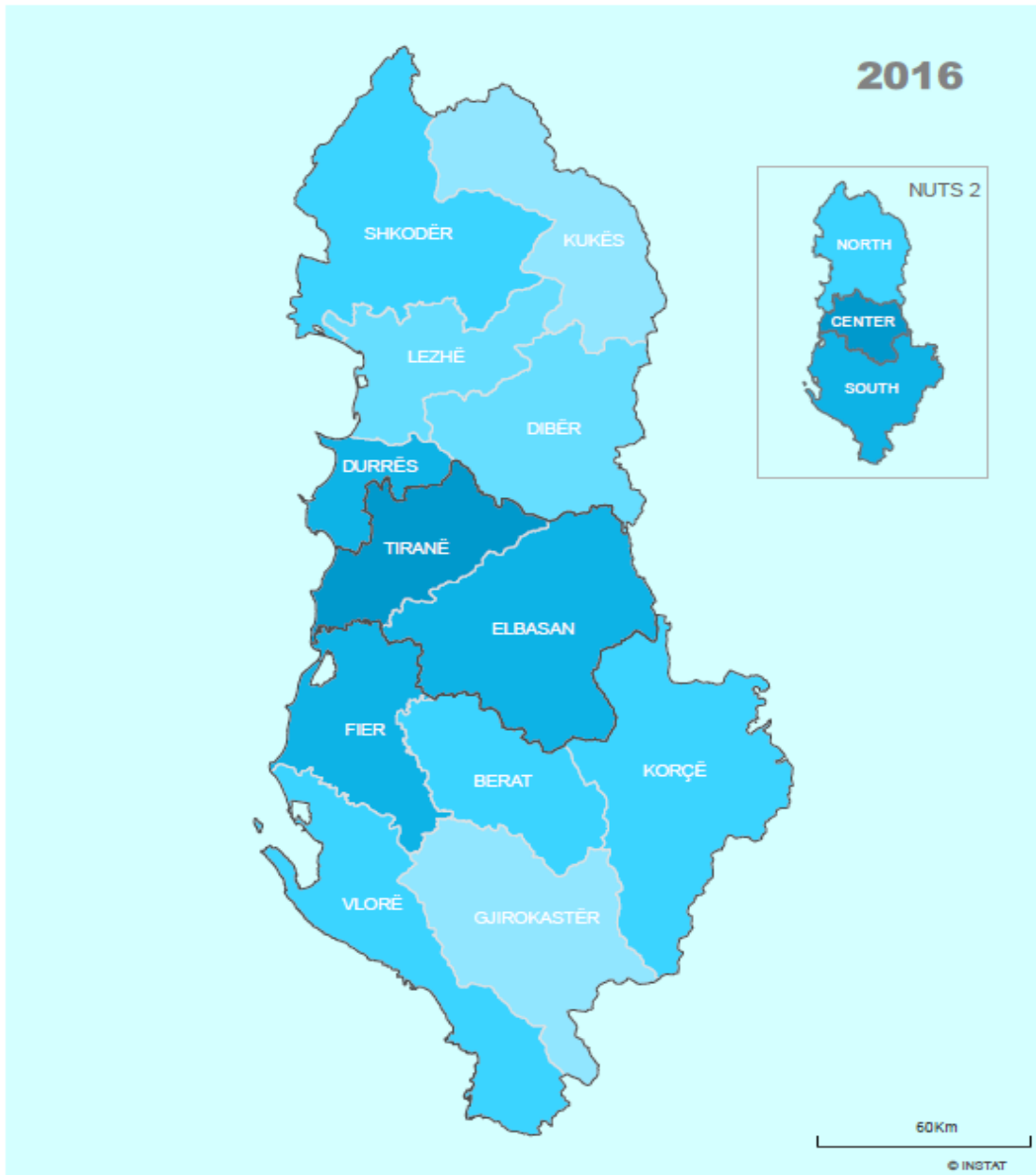
 551 - 700
 513 - 550
 361 - 512
 310 - 360

Albania 513

* Albania is divided in 3 statistical regions level 2 and 12 statistical regions level 3, corresponding existing prefectures, according to Decision of C.M no. 1037 date 16.12.2010, "On the Implementation of the nomenclature NUTS" following the Nomenclature of the Territorial Units on statistics (NUTS) of the European Union.

Note: The boundaries of administrative divisions have been designed for statistical purposes and may not reflect exactly the territory of the local units.

Fig. 4 GDP in current prices by regions



NUTS 2
 Prefecture

GDP in current prices in billion ALL

201 - 600
 101 - 200
 51 - 100
 41 - 50
 25 - 40

* Albania is divided in 3 statistical regions level 2 and 12 statistical regions level 3, corresponding existing prefectures, according to Decision of C.M no. 1037 date 15.12.2010, "On the Implementation of the nomenclature NUTS" following the Nomenclature of the Territorial Units on statistics (NUTS) of the European Union.

Note: The boundaries of administrative divisions have been designed for statistical purposes and may not reflect exactly the territory of the local units.

Information for the users

This Publication presents the Regional Accounts Result of GDP for 2016 in Albania expressed in Statistical Region Level 1, 2 and 3, following the requirements of - Nomenclature of Territorial Measuring Units for Statistics (NUTS) of the European Union and by classification of economic activities NACE Rev 2.0.

National Regional Accounts are based on the ESA 2010 methodology, mainly in Chapter 13, taking based in the most recent evaluation of Annual National Accounts, published on April 3 2018, in order to preserve the consistency of these indicators.

More detailed information about the Regional National Accounts (2011-2016) on the regional indicators can be found in the link below.

<http://www.instat.gov.al/al/themes/llogarit%C3%AB-kombetare.aspx?tab=tabs-5>

Classification and Methodology

The GDP estimations are harmonised with concepts and definitions of European System of Accounts (ESA 2010) and System of National Accounts (SNA 2008). Both these methodologies are the latest updates of ESA 1995 and SNA 1993. The European System of National Accounts and Regional Accounts is the framework for the measurement of economic and financial activities of the economic system, their components and the links between them for a given period of time (usually quarterly up to one year). Transactions made by the economic agents related to other resident or non-resident units in an economic territory are object of measurements in Regional Accounts. Classification changes are adopted to have more reliable regional economic indicator that are more useful to the users, to have a more clearer view of the economic developments of specific regions and to improve the comparability between regions and EU member states information based on the Nomenclature of Territorial Measuring Units for Statistics (NUTS) of the European Union.

Residence Principle

The main principle for allocation GVA in Regional Accounts is that GVA should be allocated to the region where the producer unit is resident, it means that GVA have to be allocated to region where is created.

Changes in the methodology and estimation of annual National Accounts were reflected in the estimation of Regional Accounts. INSTAT has made qualitative changes to the estimation method of GVA s for the distribution by economic activities of institutional units that are uni-regional or multi-regional.

Regarding the methodology used for the Regional Accounts please consult the methodological material: "Albanian Regional Account Methodology" in the address:

http://www.instat.gov.al/media/254122/methodological_inventory.pdf

The classifications used in the Regional Accounts are as follow:

- Nomenclature of Economic Activities Revision 2 (NACE Rev.2).
- Nomenclature of Territorial Measuring Units for Statistics (NUTS)

The Nomenclature of Territorial Measuring Units for Statistics (NUTS) is a uniform classification and is used as a base for collection and processing of European regional statistics.

Purchasing Power Standard (PPS) is an artificial currency unit that takes into consideration differences in national price levels. This unit allows meaningful volume comparisons of economic indicators for countries. Aggregates expressed in PPS are calculated by dividing aggregates (indicators) at current prices with national currency respectively Purchasing Power Parity (PPP). The volume index of GDP per capita expressed in Purchasing Power Standard (PPS) is given in relation to the average of the European Union (EU28 = 100).

Please note that the index expressed in PPS is intended for cross-country comparisons rather than for temporal comparisons. For further information on the PPS coefficients follow the address:

<http://ec.europa.eu/eurostat/web/purchasing-power-parities/data/database>