

Quarterly Labour Force Survey

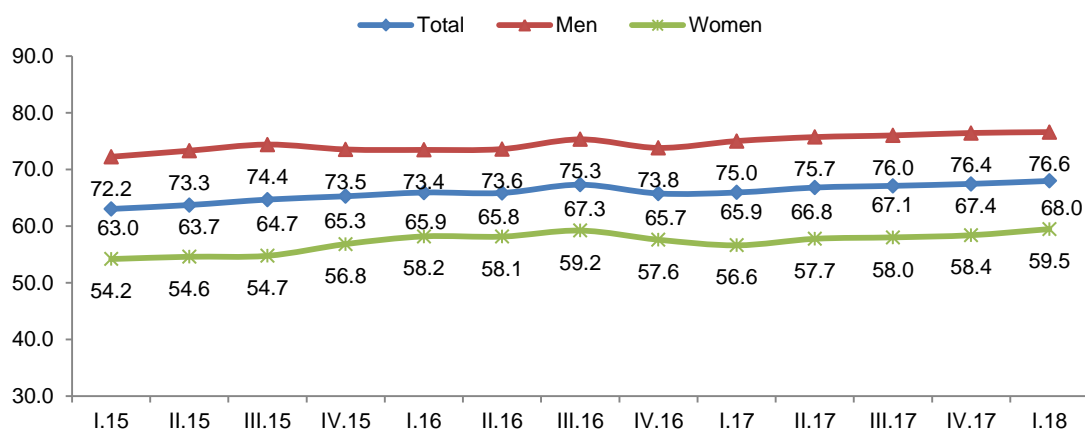
First quarter 2018

Tirana, June 11, 2018: During the first quarter of 2018, the employment rate for the population aged from 15 to 64 is 59.2 %. In this quarter, in annual terms, employment has an increasing trend: compared to the same quarter of 2017, total employment increased with 4.9 %. Whereas in quarterly terms, compared to the fourth quarter of 2017, total employment increased with 0.8 %.

In the first quarter of 2018, the official unemployment rate in Albania, for the population aged 15 years and over, is 12.5 %. Compared to the first quarter of 2017, the official unemployment rate decreased with 1.7 percentage points. Compared to the fourth quarter of 2017, the official unemployment rate decreased by 0.9 percentage points.

In the first quarter of 2018, the labour force participation rate for the population aged from 15 to 64 is 68 %. Compared to the first quarter of 2017, the labour force participation rate is 2 percentage points higher. Compared with the previous quarter this indicator increased by 0.5 percentage points.

Fig. 1 Labour Force Participation Rate, population aged 15 to 64, Q.1/15 - Q.1/18



The women labour force participation rate is 58.5 %, whereas for men this indicator is 76.6 %. The men's labour force participation rate is 17.1 percentage points higher than women's. Compared to the same quarter of 2017, the women's labour force participation rate increased by 2.9 percentage points and for men increased by 1.6 percentage points.

Over the first quarter 2018, the youth labour force participation rate (population aged from 15 to 29) is 47.5 %. For the population aged from 30 to 64, in the first quarter 2018, labour force participation rate is 79.1 %.

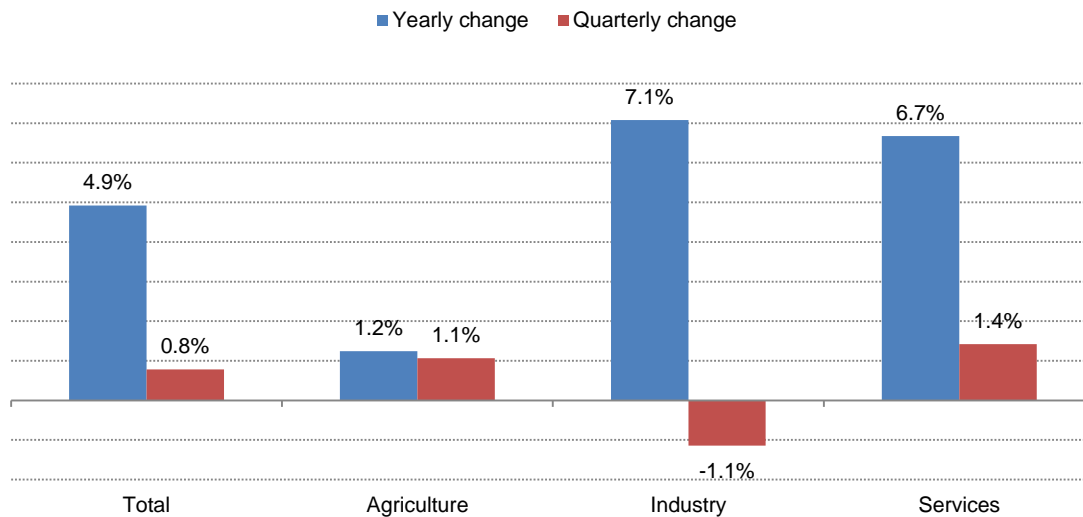
Employment

In the first quarter of 2018, employment-to-population rate, for the population aged 15 to 64, is 59.2 %.

In annual terms, the employment growth rate for the population aged 15 and over is 4.9 %. The annual employment growth rate by main economic sectors is: 7.1 % in industry, 6.7 % in the services sector and 1.2 % in the agriculture sector.

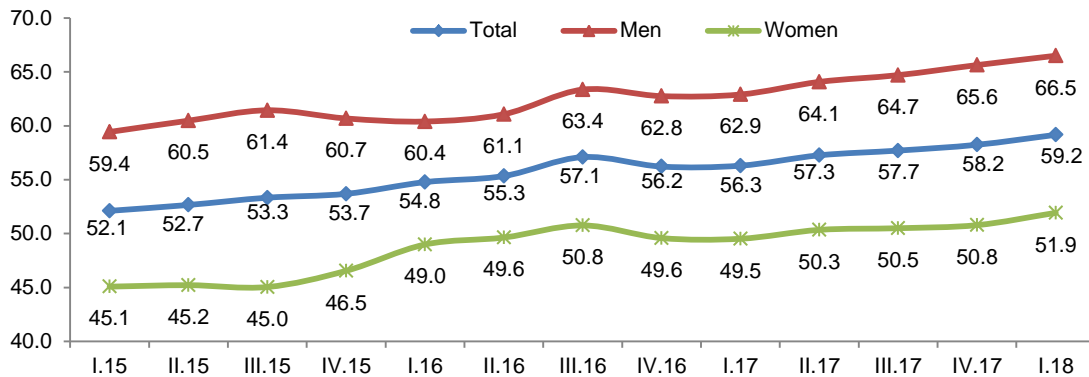
Compared to the previous quarter, in the first quarter 2018 employment for the population aged 15 years and over, increased by 0.8 %. Employment increased in services with 1.4 % and in agriculture with 1.1 %, while it decreased in industry with 1.1 %.

Fig. 2 Employment growth rate in yearly and quarterly basis, population aged 15 and over



Men's employment rate is 66.5 %, whereas for women is 51.9 %. Compared to the same quarter of the previous year, men's employment rate increased by 3.6 percentage points, while for women it increased by 2.4 percentage points. The youth employment rate is 35.9 %. For the population aged 30 to 64, in the first quarter 2018, the employment rate is 71.9 %.

Fig. 3 Employment Rate, population aged 15 to 64, Q.1/15 - Q.1/18

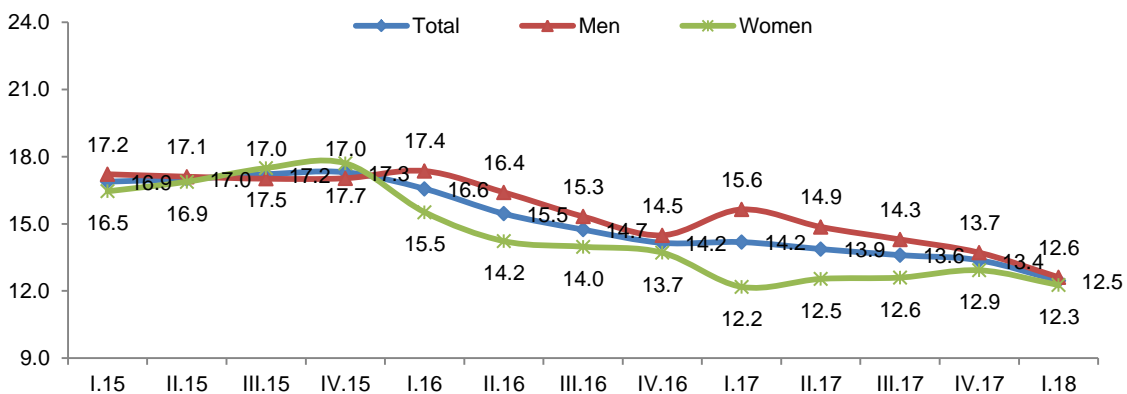


Unemployment

In the first quarter of 2018, the official unemployment rate in Albania is 12.5 %. In annual terms, the official unemployment rate decreased by 1.7 percentage points. Compared to the previous quarter, the official unemployment rate decreased by 0.9 percentage points.

The men’s official unemployment rate is 12.6 % and for women is 12.3 %. The women’s unemployment rate is 0.3 percentage points lower than men’s. Compared to the same quarter of the previous year, men’s unemployment rate decreased by 3 percentage points, whereas women’s unemployment rate remained almost at the same level.

Fig. 4 Official Unemployment Rate, population aged 15 and over, Q.1/15 - Q.1/18



The official youth unemployment rate is 24.5 %. In annual terms, the youth unemployment rate has a decreasing trend. Compared to the first quarter of 2017, the youth unemployment rate in the first quarter of 2018 is 2.1 percentage points lower. Compared to the fourth quarter of 2017, youth unemployment rate decreased by 0.1 percentage points.

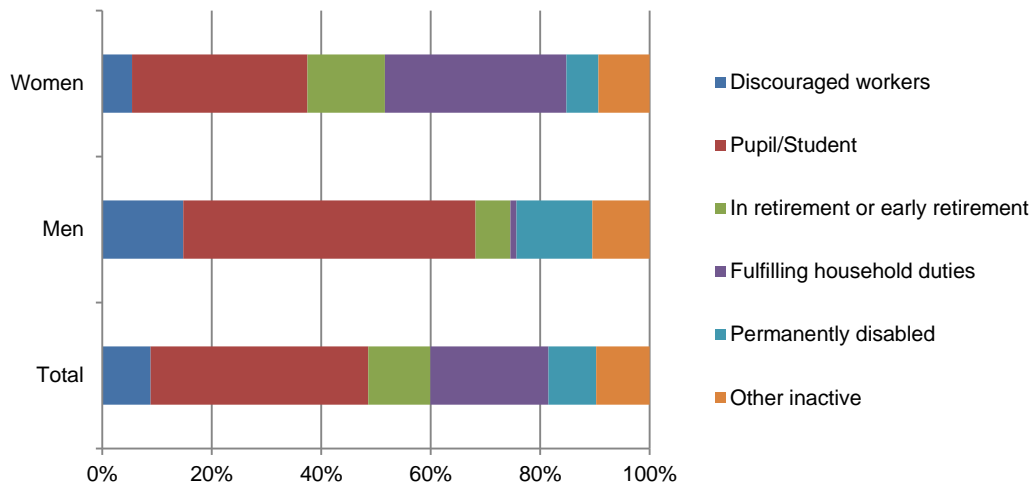
The unemployment rate for the population aged 30 to 64 is 9.2 %. In annual terms, this indicator has slightly decreased by 2 percentage points. Compared to the previous quarter, unemployment rate for this age group decreased by 1.3 percentage points.

The economically inactive population

Over the first quarter of 2018, 21.5 % of the economically inactive population and at the working age (15 to 64 years old), were fulfilling household duties, 11.3 % was in retirement or early retirement, while 8.7 % were permanently disabled.

In the first quarter of 2018, 8.9 % of the economically inactive population (aged 15 to 64) declared that the main reason for not looking for work is because of believe that no work is available.

Fig. 5 Structure of the economically inactive population by sex and inactivity status



Within the non-economically active youth population aged 15 to 29, 68.4 % are pupils/students or pursuing a training. Among the economically inactive youth population aged 15 to 29, 8.2 % are classified as discouraged workers. In the adult economically inactive population (aged 30 to 64), discouraged workers account for 9.7 %.

Tab. 1 Unemployment Rate, Q.1/14-Q.1/18

Age	Sex	Q.1.2014	Q.2.2014	Q.3.2014	Q.4.2014	Q.1.2015	Q.2.2015	Q.3.2015	Q.4.2015	Q.1.2016	Q.2.2016	Q.3.2016	Q.4.2016	Q.1.2017	Q.2.2017	Q.3.2017	Q.4.2017	Q.1.2018
15 years and over	Total	18.2	17.2	17.0	17.6	16.9	17.0	17.2	17.3	16.6	15.5	14.7	14.2	14.2	13.9	13.6	13.4	12.5
	Men	19.4	19.3	19.1	18.9	17.2	17.1	17.0	17.0	17.4	16.4	15.3	14.5	15.6	14.9	14.3	13.7	12.6
	Women	16.4	14.4	14.2	15.8	16.5	16.9	17.5	17.8	15.5	14.2	14.0	13.7	12.2	12.5	12.6	12.9	12.3
15-64 years	Total	18.6	17.7	17.4	18.0	17.3	17.3	17.5	17.7	16.9	15.9	15.2	14.5	14.6	14.3	14.0	13.6	13.0
	Men	19.9	19.8	19.6	19.4	17.7	17.5	17.4	17.5	17.8	17.0	15.9	15.0	16.1	15.4	14.8	14.1	13.2
	Women	16.8	14.7	14.5	16.1	16.8	17.2	17.7	18.1	15.8	14.5	14.3	13.9	12.5	12.8	12.8	13.0	12.7
15-29 years	Total	30.2	33.5	32.4	33.9	34.1	34.2	32.3	32.2	30.4	29.9	27.4	28.1	26.6	26.4	26.0	24.6	24.5
	Men	33.0	37.1	35.7	36.5	33.5	33.3	31.0	31.6	30.7	31.2	27.7	29.3	28.6	27.4	26.6	25.6	24.2
	Women	25.4	27.1	26.9	29.7	35.1	35.9	34.8	33.1	30.1	28.0	26.9	26.2	23.4	24.7	25.0	23.1	24.9
30-64 years	Total	15.1	12.8	12.4	12.8	12.0	12.1	12.9	13.1	12.9	11.9	11.7	10.6	11.2	10.8	10.6	10.5	9.2
	Men	15.5	13.8	13.6	13.3	12.3	11.9	12.4	12.4	13.5	12.6	12.1	10.5	12.3	11.5	11.1	10.6	9.3
	Women	14.6	11.5	11.0	12.3	11.6	12.5	13.4	13.9	12.2	11.0	11.1	10.7	9.8	9.9	10.0	10.4	9.0

Tab. 2 Employment Rate, Q.1/14 - Q.1/18

Age	Sex	Q.1.2014	Q.2.2014	Q.3.2014	Q.4.2014	Q.1.2015	Q.2.2015	Q.3.2015	Q.4.2015	Q.1.2016	Q.2.2016	Q.3.2016	Q.4.2016	Q.1.2017	Q.2.2017	Q.3.2017	Q.4.2017	Q.1.2018
15 years and over	Total	41.5	44.4	45.8	45.6	45.6	45.8	46.3	46.7	47.5	48.4	49.9	49.1	49.2	50.0	50.7	51.2	51.9
	Men	48.3	52.2	52.7	52.3	52.5	53.0	54.1	53.4	53.1	54.0	56.1	55.4	55.6	56.7	57.7	58.2	58.9
	Women	34.9	37.1	39.2	39.3	39.0	38.9	38.5	39.9	41.9	42.8	43.7	42.8	42.7	43.4	43.8	44.2	45.0
15-64 years	Total	47.1	50.5	52.3	52.1	52.1	52.7	53.3	53.7	54.8	55.3	57.1	56.2	56.3	57.3	57.7	58.2	59.2
	Men	54.4	58.7	59.7	59.2	59.4	60.5	61.4	60.7	60.4	61.1	63.4	62.8	62.9	64.1	64.7	65.6	66.5
	Women	39.9	42.7	45.4	45.4	45.1	45.2	45.0	46.5	49.0	49.6	50.8	49.6	49.5	50.3	50.5	50.8	51.9
15-29 years	Total	25.8	27.5	30.5	29.2	28.9	28.6	30.4	31.1	32.1	31.6	33.5	32.5	33.0	33.6	33.5	34.9	35.9
	Men	30.2	32.8	35.4	33.7	33.6	35.1	38.0	36.3	36.5	34.8	37.9	35.9	36.9	38.4	39.2	39.7	41.6
	Women	21.1	22.1	25.5	24.5	23.9	21.6	21.9	25.2	27.0	28.0	28.4	28.6	28.4	28.1	26.9	29.7	29.8
30-64 years	Total	59.4	62.9	64.1	64.5	64.4	65.4	65.4	65.6	65.7	66.8	68.5	67.8	67.5	68.6	69.3	69.4	71.9
	Men	69.4	73.5	73.7	74.0	74.4	75.3	74.9	74.6	73.0	74.8	76.7	77.0	76.6	77.8	78.1	79.0	80.6
	Women	50.0	53.2	55.3	55.9	55.4	56.6	56.3	56.9	58.6	59.2	60.6	58.9	58.7	60.0	60.9	60.3	63.5

Tab. 3 Labour Force Participation Rate, Q.1/14 - Q.1/18

Age	Sex	Q.1.2014	Q.2.2014	Q.3.2014	Q.4.2014	Q.1.2015	Q.2.2015	Q.3.2015	Q.4.2015	Q.1.2016	Q.2.2016	Q.3.2016	Q.4.2016	Q.1.2017	Q.2.2017	Q.3.2017	Q.4.2017	Q.1.2018
15 years and over	Total	50.8	53.6	55.2	55.3	54.8	55.2	55.9	56.8	56.9	57.2	58.5	57.2	57.3	58.1	58.7	59.1	59.3
	Men	59.9	64.7	65.1	64.5	63.4	63.9	65.1	64.7	64.3	64.7	66.3	64.8	66.0	66.6	67.3	67.4	67.4
	Women	41.8	43.3	45.8	46.7	46.7	46.8	46.6	48.9	49.5	49.9	50.8	49.5	48.6	49.6	50.1	50.8	51.3
15-64 years	Total	57.9	61.3	63.4	63.6	63.0	63.7	64.7	65.3	65.9	65.8	67.3	65.7	65.9	66.8	67.1	67.4	68.0
	Men	68.0	73.2	74.2	73.5	72.2	73.3	74.4	73.5	73.4	73.5	75.3	73.8	75.0	75.7	76.0	76.4	76.6
	Women	47.9	50.1	53.0	54.1	54.2	54.6	54.7	56.8	58.2	58.1	59.2	57.6	56.6	57.7	58.0	58.4	59.5
15-29 years	Total	36.9	41.4	45.1	44.2	43.9	43.4	45.0	45.9	46.2	45.0	46.1	45.2	44.9	45.7	45.2	46.3	47.5
	Men	45.1	52.2	55.0	53.0	50.5	52.5	55.1	53.1	52.7	50.6	52.5	50.8	51.6	52.9	53.4	53.3	54.9
	Women	28.2	30.3	34.9	34.9	36.7	33.6	33.5	37.7	38.6	38.9	38.8	38.8	37.1	37.3	35.9	38.6	39.7
30-64 years	Total	69.9	72.1	73.2	74.0	73.2	74.4	75.1	75.5	75.4	75.8	77.5	75.8	76.0	76.9	77.5	77.6	79.1
	Men	82.1	85.3	85.3	85.3	84.8	85.4	85.5	85.2	84.4	85.6	87.3	86.0	87.3	87.9	87.8	88.3	88.9
	Women	58.6	60.1	62.2	63.7	62.6	64.7	65.1	66.1	66.7	66.5	68.1	66.0	65.1	66.6	67.7	67.3	69.8

Labour market indicators by prefectures

Tab. 4 Main labour market indicators, population aged 15 and over

Prefectures	Labour Force Participation Rate								Employment Rate								Unemployment Rate							
	Q2.16	Q3.16	Q4.16	Q1.17	Q2.17	Q3.17	Q4.17	Q1.18	Q2.16	Q3.16	Q4.16	Q1.17	Q2.17	Q3.17	Q4.17	Q1.18	Q2.16	Q3.16	Q4.16	Q1.17	Q2.17	Q3.17	Q4.17	Q1.18
Albania	57.3	58.5	57.2	57.3	58.1	58.7	59.1	59.3	48.4	49.9	49.1	49.2	50.0	50.7	51.2	51.9	15.5	14.7	14.2	14.2	13.9	13.6	13.4	12.5
Berat	58.8	62.7	58.4	57.3	59.7	59.4	61.1	63.0	53.6	57.2	51.9	49.5	51.6	52.5	53.2	57.4	8.9	8.7	11.1	13.7	13.5	11.7	12.8	8.8
Dibër	54.7	60.4	59.2	60.4	60.6	59.8	58.9	63.6	50.3	55.6	53.9	54.9	56.6	55.8	54.8	59.8	8.1	7.9	8.9	9.1	6.7	6.7	7.0	6.0
Durrës	53.6	53.6	53.3	51.4	52.1	51.2	52.9	53.1	45.7	45.2	46.3	44.8	46.4	45.2	46.4	46.3	14.7	15.6	13.2	12.9	10.8	11.9	12.2	12.7
Elbasan	66.8	68.3	67.2	68.9	67.5	68.5	66.4	66.5	57.2	59.8	58.5	61.0	60.2	62.6	61.0	61.8	14.4	12.4	12.9	11.5	10.8	8.5	8.2	7.1
Fier	62.8	63.2	63.0	62.3	64.1	63.6	64.1	67.2	54.9	54.7	54.5	54.2	54.7	54.8	55.1	60.5	11.9	13.5	13.5	13.0	14.6	13.8	14.0	10.0
Gjirokastrë	62.0	57.6	56.7	57.9	57.3	60.0	59.7	58.9	53.4	50.3	51.0	51.7	49.9	52.1	52.4	53.5	13.8	12.7	10.0	10.6	12.9	13.1	12.3	9.2
Korçë	54.1	57.9	52.3	52.3	53.7	58.5	58.6	58.6	48.7	52.9	48.3	48.1	49.6	54.2	54.2	55.0	9.9	8.6	7.7	8.1	7.6	7.3	7.5	6.1
Kukës	48.3	55.8	54.5	55.2	58.7	57.1	57.0	55.9	39.3	46.7	46.7	46.7	50.4	49.6	50.1	50.8	18.7	16.3	14.3	15.4	14.2	13.2	12.0	9.2
Lezhë	56.1	56.8	55.8	56.1	56.9	56.8	54.9	54.1	48.1	48.3	47.8	47.0	47.0	47.4	46.0	44.3	14.3	14.9	14.5	16.2	17.5	16.6	16.1	18.2
Shkodër	59.5	57.6	57.3	59.1	60.2	60.7	61.1	63.8	51.3	51.6	49.5	51.8	52.5	53.1	53.5	55.0	13.9	10.4	13.6	12.4	12.7	12.5	12.4	13.9
Tirana	53.0	54.4	53.6	54.1	54.5	55.3	55.9	55.0	42.6	43.8	44.5	44.7	45.6	45.9	47.0	46.7	19.5	19.5	16.9	17.4	16.3	17.0	16.1	15.0
Vlorë	62.1	60.2	58.4	56.2	58.6	58.6	62.6	61.4	45.7	46.4	44.9	43.4	44.4	44.2	47.7	46.4	26.4	22.9	23.1	22.7	24.3	24.6	23.9	24.5

Tab. 5 Main labour market indicators, population aged 15 to 64

Prefectures	Labour Force Participation Rate								Employment Rate								Unemployment Rate							
	Q2.16	Q3.16	Q4.16	Q1.17	Q2.17	Q3.17	Q4.17	Q1.18	Q2.16	Q3.16	Q4.16	Q1.17	Q2.17	Q3.17	Q4.17	Q1.18	Q2.16	Q3.16	Q4.16	Q1.17	Q2.17	Q3.17	Q4.17	Q1.18
Albania	65.8	67.3	65.7	65.9	66.8	67.1	67.4	68.0	55.3	57.1	56.2	56.3	57.3	57.7	58.2	59.2	15.9	15.2	14.5	14.6	14.3	14.0	13.6	13.0
Berat	67.6	71.0	66.2	65.4	68.4	67.5	69.7	71.5	61.3	64.5	58.5	56.0	58.8	59.3	60.4	64.8	9.2	9.2	11.6	14.3	14.0	12.2	13.4	9.4
Dibër	62.2	68.6	66.4	68.8	68.6	66.4	66.3	68.7	56.9	62.8	60.2	62.3	63.7	61.7	61.6	64.4	8.5	8.3	9.3	9.5	7.1	7.2	7.0	6.4
Durrës	62.7	62.8	62.5	60.2	61.1	59.9	62.0	63.0	53.5	52.9	54.2	52.4	54.5	52.8	54.4	54.9	14.8	15.7	13.2	13.0	10.8	11.9	12.2	12.8
Elbasan	75.1	76.7	75.8	77.5	76.2	76.4	74.1	72.7	63.6	66.7	65.5	68.2	67.6	69.4	68.0	67.0	15.2	13.1	13.6	12.0	11.4	9.1	8.2	7.8
Fier	71.2	72.0	71.8	70.4	72.1	71.4	72.2	76.4	61.8	61.9	61.6	60.7	60.9	60.9	61.6	68.4	12.4	14.1	14.1	13.7	15.5	14.6	14.8	10.5
Gjirokastrë	72.5	67.2	64.8	67.4	67.1	68.9	68.3	69.2	62.3	58.5	58.0	60.1	58.3	59.6	59.6	62.6	14.0	12.9	10.4	10.8	13.0	13.6	12.7	9.5
Korçë	60.8	65.2	60.0	59.9	61.7	67.0	66.8	67.1	54.5	59.3	55.2	54.9	56.8	61.9	61.9	62.9	10.5	9.1	7.9	8.4	7.9	7.6	7.4	6.3
Kukës	57.2	66.1	63.3	65.5	69.8	67.7	66.9	66.9	46.5	55.2	55.4	55.4	59.9	58.7	59.4	61.2	18.8	16.4	12.5	15.4	14.3	13.3	11.1	8.4
Lezhë	64.6	64.8	63.9	63.0	64.5	63.9	62.2	62.6	55.1	54.8	54.4	52.2	52.7	52.7	51.7	50.7	14.7	15.5	15.0	17.1	18.3	17.5	16.8	19.0
Shkodër	68.1	65.7	64.3	67.2	69.3	69.4	68.7	72.2	58.3	58.5	55.1	58.5	60.2	60.4	59.7	61.6	14.4	10.9	14.2	12.9	13.1	13.0	13.1	14.7
Tirana	61.8	63.8	62.7	63.4	63.5	64.2	64.8	64.2	49.7	51.3	52.1	52.2	53.0	53.3	54.3	54.4	19.6	19.5	17.0	17.5	16.4	16.9	16.1	15.2
Vlorë	71.4	69.7	68.3	65.6	66.9	67.1	71.0	70.0	52.0	53.5	52.3	50.5	50.4	50.2	53.4	52.0	27.1	23.3	23.4	23.0	24.7	25.3	24.8	25.7

Tab. 6 Employment structure by main economic sectors, population aged 15 and over (%)

Prefectures	Agriculture								
	Q1.16	Q2.16	Q3.16	Q4.16	Q1.17	Q2.17	Q3.17	Q4.17	Q1.18
Albania	40.7	40.4	40.1	39.7	39.0	38.4	37.9	37.6	37.7
Berat	65.8	62.8	61.3	59.2	55.7	56.0	52.5	52.7	61.5
Dibër	70.9	73.3	68.6	64.5	57.4	59.4	61.1	57.3	62.4
Durrës	25.0	20.6	20.7	23.5	20.1	16.7	14.8	15.9	14.7
Elbasan	63.2	65.4	65.8	63.9	64.8	64.9	63.8	62.0	68.2
Fier	65.1	60.6	58.9	63.7	63.5	61.9	61.7	62.0	63.6
Gjrokastër	40.3	44.0	47.1	47.2	44.6	51.3	41.0	40.9	40.0
Korçë	58.5	58.6	59.3	57.7	55.8	49.8	52.9	52.5	51.8
Kukës	68.4	72.0	73.0	66.7	61.6	58.3	63.8	58.3	62.6
Lezhë	35.7	36.7	40.8	40.1	45.1	45.8	39.2	35.9	33.9
Shkodër	48.4	50.6	49.2	44.4	45.7	48.8	44.1	46.3	44.9
Tirana	4.7	6.5	4.2	6.1	5.5	6.1	5.9	7.2	6.9
Vlorë	23.7	22.4	25.2	26.8	27.2	23.7	28.8	30.8	29.3

Prefectures	Industry								
	Q1.16	Q2.16	Q3.16	Q4.16	Q1.17	Q2.17	Q3.17	Q4.17	Q1.18
Albania	19.1	19.1	19.6	19.5	19.0	19.0	19.4	20.0	19.7
Berat	14.8	17.7	18.9	16.7	16.3	14.3	17.8	17.9	14.7
Dibër	7.5	7.0	11.5	12.7	12.9	10.9	12.0	13.6	12.1
Durrës	34.7	35.5	35.7	35.4	35.4	39.8	37.6	35.9	35.2
Elbasan	12.5	10.3	9.8	10.0	8.5	7.8	10.4	10.3	9.6
Fier	9.8	11.8	11.9	9.8	8.9	10.5	11.6	13.0	11.8
Gjrokastër	20.9	27.2	27.7	21.0	17.8	13.8	14.8	17.4	15.1
Korçë	14.0	10.1	10.3	14.0	14.1	13.5	13.3	14.6	14.7
Kukës	5.1	6.3	7.9	10.3	12.5	12.5	10.4	11.2	7.4
Lezhë	18.3	17.8	19.0	20.3	17.7	18.5	21.3	20.5	19.6
Shkodër	17.8	16.5	17.8	21.5	19.8	16.4	19.2	19.4	19.0
Tirana	25.7	26.6	27.1	25.0	25.1	25.5	24.9	26.0	26.5
Vlorë	28.5	25.7	25.3	26.6	30.1	27.2	25.5	25.6	24.3

Prefectures	Services								
	Q1.16	Q2.16	Q3.16	Q4.16	Q1.17	Q2.17	Q3.17	Q4.17	Q1.18
Albania	40.1	40.5	40.3	40.8	42.0	42.7	42.7	42.4	42.7
Berat	19.4	19.5	19.8	24.1	28.0	29.7	29.6	29.4	23.8
Dibër	21.6	19.7	20.0	22.8	29.7	29.8	26.9	29.1	25.5
Durrës	40.4	43.9	43.6	41.1	44.3	43.6	47.6	48.2	50.1
Elbasan	24.3	24.4	24.4	26.2	26.8	27.3	25.8	27.7	22.2
Fier	25.1	27.7	29.2	26.5	27.6	27.5	26.7	25.0	24.7
Gjrokastër	38.9	28.8	25.2	31.7	37.6	34.9	44.2	41.7	44.9
Korçë	27.6	31.4	30.4	28.3	30.1	36.7	33.8	32.9	33.4
Kukës	26.5	21.7	19.1	22.9	26.0	29.2	25.8	30.5	30.0
Lezhë	46.0	45.5	40.2	39.6	37.2	35.7	39.6	43.6	46.5
Shkodër	33.8	32.9	33.0	34.0	34.5	34.7	36.7	34.3	36.2
Tirana	69.4	66.9	68.7	69.0	69.4	68.3	69.2	66.8	66.6
Vlorë	44.2	51.9	49.5	46.2	42.8	49.1	45.7	43.6	46.4

Methodology

The Quarterly Labour Force Survey is a household based survey. Its main objective is to provide information on the labour market situation in Albania, which serves policymakers to design labour market policies and to assess their effectiveness, and to meet user needs for updated information on the labour market dynamics.

The sample frame used for the QLFS is based on data of Enumeration Areas according to the Housing and Population Census of 2011. The sample size for the fourth quarter of 2017 is 7,944 households. The sample is based in a two-stage sampling procedure. In the first stage are selected the geographical areas with a proportional probability to the size of the enumeration area. In the second stage within each of the geographical areas (once selected in the first stage) are selected a fix number of households by equal probability systematic sampling method.

The QLFS uses a rotational sampling design, whereby a household once initially selected for interview, is retained in the sample for five consecutive quarters. The same household is scheduled to be interviewed exactly after 13 weeks apart, so that the fifth interview takes place one year after the first. In the fourth quarter of 2017, the household response rate was 84.9 %.

Data collection in the fieldwork is spread during all months of the year. In the selected households, were surveyed by face-to-face interview, all household members aged 15 years and above. The QLFS questionnaire was drafted with the technical assistance from EUROSTAT and in complete compliance with its recommendations and regulations. The methodological part fulfils all EUROSTAT standards linked with the representation of the sample, coefficient of the variation of the main indicators, the questionnaire design, and data weighting procedures.

As for the weighting procedure of LFS data, it is used the estimated annual population, based on 2011 housing and population census data and vital statistics (births and deaths) provided from the General Directory of Civil Status.

Employed are considered all the persons who have worked even for one hour with a respective salary or profit during the reference week. The **reference week** is the calendar week from Monday to Sunday before the date of the interview.

As employed are considered also all persons who were receiving a salary or wage while they were in training during their work. Employed are also considered persons temporarily absent at work during the reference week for some reasons: (1) maternity leave, illness, injury or temporary disability and expect to return to work, education / training directly related to the actual work; (2) salaried employees absent from work for some reasons other than the above that (a) lack of the duration is three months or less,

and the person is not a seasonal worker or (b) the person takes 50% or more salary; (3) the self-employed who intend to return to the business / farm / or professional practice; (4) workers not being paid who expect to return to work in three months or less.

People who work on their small farm, who do not sell their products, but produce only for self-consumption, are considered as employed.

Unemployed comprise persons who during the reference week were:

- a) Without work, i.e. neither had a job nor were at work (for one hour or more) in paid employment or self-employment;
- b) Currently available for work, (were available before the end of the two weeks following the reference week);
- c) Actively seeking work, (had taken specific steps in the four week period ending with the reference week to seek paid employment or self-employment) or who found a job to start later, (within a period of at most three months).

The following are considered as specific steps:

- Having been in contact with a public employment office to find work;
- Having been in contact with a private employment agency to find work;
- Applying to employers directly;
- Asking friends, relatives, unions, etc., to find work;
- Placing or answering job advertisements;
- Studying job advertisements;
- Taking a recruitment test or examination or being interviewed;
- Looking for land, premises or equipment;
- Applying for permits, licences or financial resources.

Explanatory note on the labour market indicators

The headline labour force participation and employment rates are based on the population aged 15 to 64. Whereas, the headline unemployment rate is based on the economically active population (labour force) aged 15 and over.

The employment and labour force participation rates for those aged 15 and over are affected by the inclusion of the retired population in the denominators and are therefore less meaningful than the rates for those aged from 15 to 64. However, for the unemployment rate for those aged 15 and over, the denominator for the unemployment rate is the economically active population which includes people in work or actively seeking and able to work. Therefore, this indicator is not affected by the retired population.

Working age population is the population between 15-64 years old.

Labour Force includes employed and unemployed persons.

Non-economically active population comprises all persons who are not classified as employed or unemployed (pupils/students, housekeepers, in a compulsory military service, retired, disabled, discouraged unemployed).

The employment rate is the proportion of employed 15-64 years compared to the working age population.

The unemployment rate is the ratio of the unemployed to the labour force.

Labour force participation rate is the proportion of the labour force compared to the working age population.

The quality of labour market statistics

The main labour market indicators are estimates based on the quarterly labour force survey. The survey is based on a probability sample of 7,944 households. The selection of households is made such as to insure as much as possible the accuracy of estimates for the main labour market indicators. Thus, from a survey are obtained estimates and not precise figures for the number of employed and unemployed. For each estimate obtained by a survey is calculated the generalised sampling variability in order to explore how the estimate would change if we were drawing different random samples with the same size and for the same period, instead of just one sample. This allows defining the range within which should lay the estimate (which in the statistical terminology is known as confidence interval).

In general, the lower the relative standard deviation of an estimate, the higher the accuracy level of that estimate. Table 7 below shows the relative standard deviation and the confidence interval for the three main labour market indicators for the population aged 15-64.

Tab. 7 Generalised sampling standard deviations for the main labour market indicators

Indicators	Estimate (for population aged 15-64)	Standard deviation	Relative standard deviation	95 % confidence interval	
				Lower limit	Upper limit
Labour force participation rate	68,0%	0,1%	0,1%	67,9%	68,1%
Employment rate	59,2%	0,1%	0,2%	59,0%	59,4%
Unemployment rate	13,0%	0,1%	0,5%	12,5%	13,5%

The unemployment rate, for a 95 % confidence level, lies within the range 12.5 % to 13.5 %, with a relative standard deviation of 0.5 %. The relative standard error for the proportion of population aged 15-64 in employment is 0.1 % and for a 95 % confidence level, the sample estimate of employment rate is between the values 59.0 % to 59.4 %.