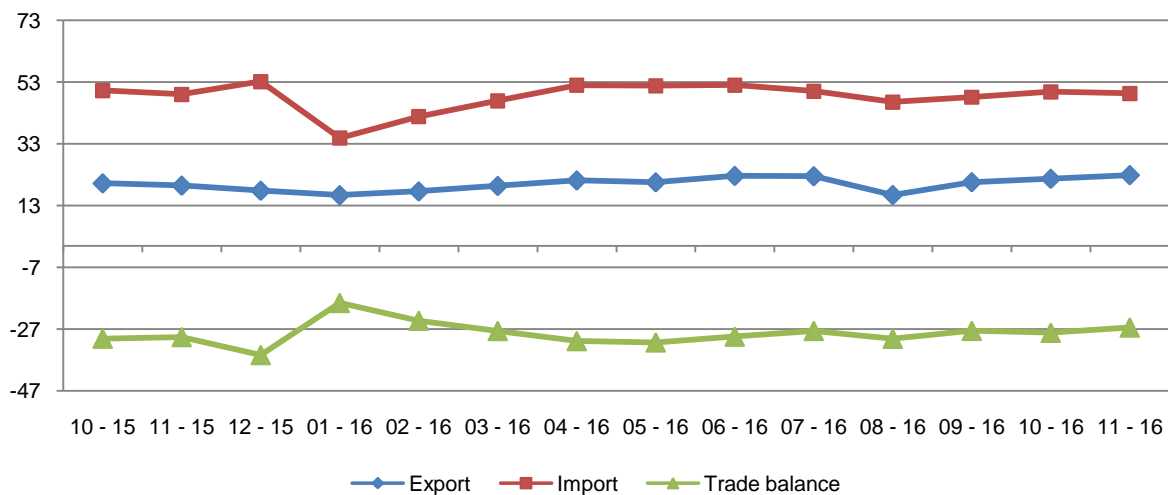


# Foreign Trade in Goods

## November, 2015

**Tirana, December 28, 2016:** On November 2016 the value of exports was 23 billion lekë, increasing by 17.4 % compared with the same period of previous year and by 5.4 % compared with October 2016. The value of imports in November 2016, was 49 billion lekë, increasing by 0.6 % compared with the same period of previous year and decreasing by 1.0 % compared with October 2016. This month the trade deficit is 26 billion lekë signing an decrease by 10.5 % compared with November 2015 and 6.0 % compared with October 2016.

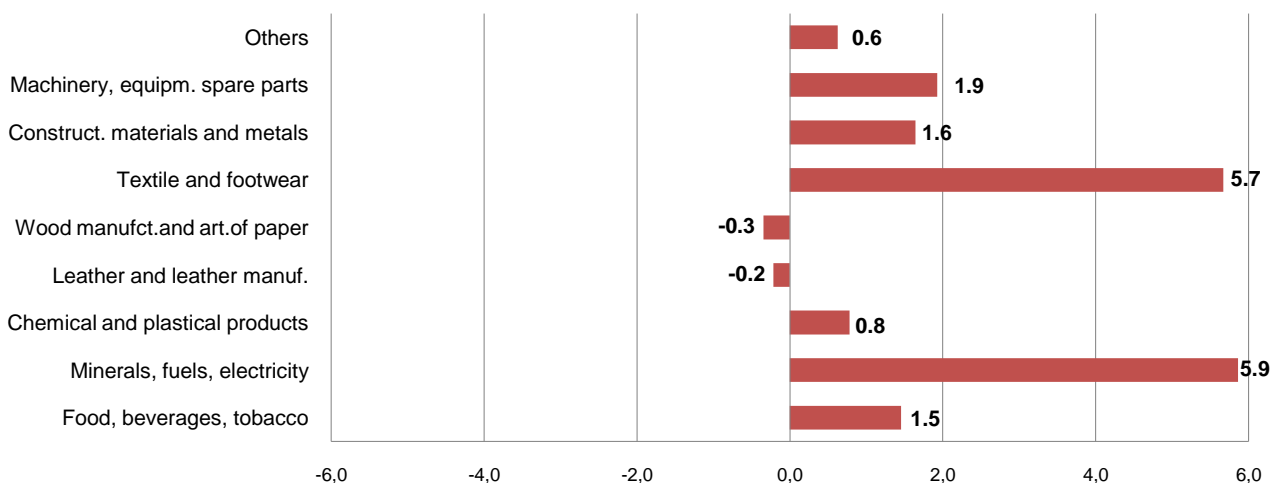
Fig.1 Flow of goods, October 2015 – November 2016 (billionALL)



### The influence of the main groups in the annual change in exports:

In annual increase of exports by 17.4 % this month a positive contribution was given by the groups: "Minerals, fuels, electricity" with +5.9 percentage point, "Textile and footwear" with +5.7 percentage point, "Machinery, equipment spare parts" with +1.9 percentage point. While a negative contribution was given by the groups: "Wood manufactories and article of paper" with -0.3 percentage point, "Leather and leather manufactories" with -0.2 percentage point

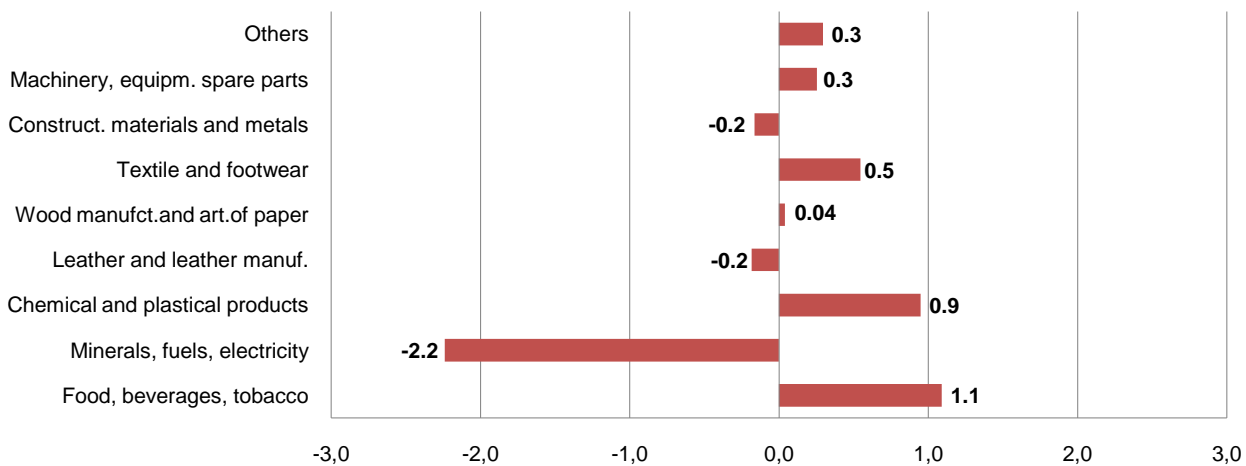
**Fig.2 Annual impact of groups in exports**



**The influence of the main groups in the annual change in imports:**

In annual increase of imports by 0.6 % in November 2016 a positive contribution was given by the groups: “Food, beverages, tobacco” with +1.1 percentage point, “Chemical and plastical products” with +0.9 percentage point. “Textile and footwear” with +0.5 percentage point. While a negative contribution was given by the group: “Minerals, fuels, electricity” with -2.2 percentage point“, “Construction materials and metals” with -0.2 percentage point and “Leather and leather manufactories” with -0.2 percentage point.

**Fig.3 Annual impact of groups in imports**

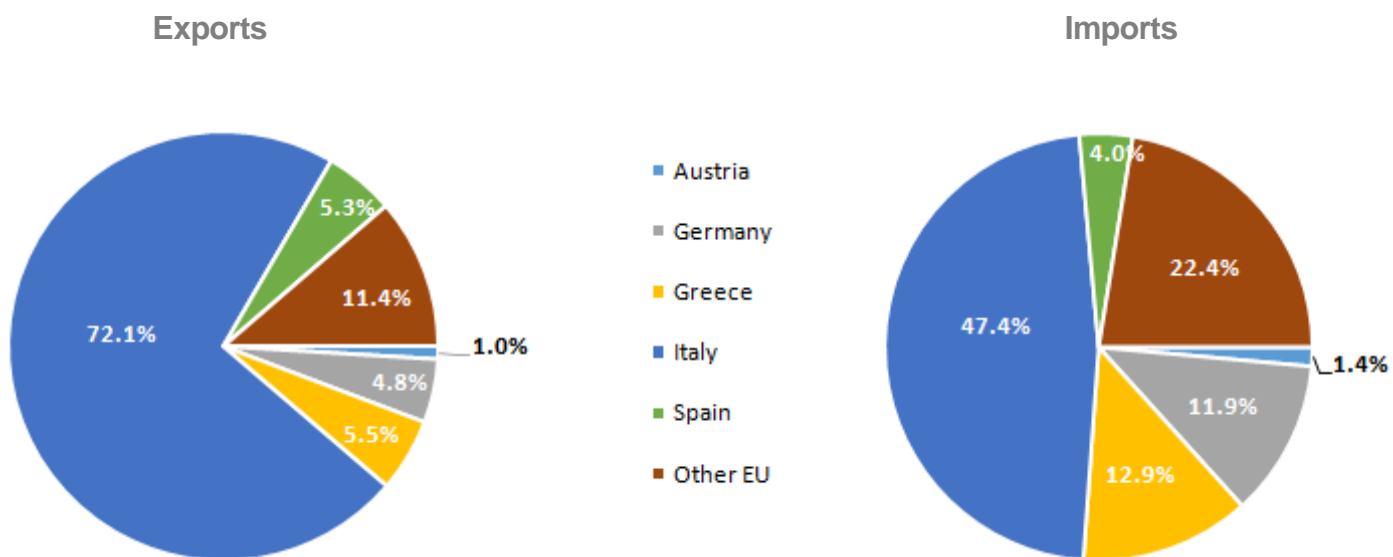


**The performance of trade in goods by partner countries**

In November 2016, countries with which Albania has had the highest increase of exports, compared to November 2015 are: Italy with (12.7 %), Kosovo with (10.1 %) and China with (137.8 %). While, countries with which has had a decrease of exports are: Hungary with (-39.7 %), Netherlands with (-21.9 %) and Iraq with (-25.7 %).

In November 2016, countries with which Albania has had the highest increase of imports, compared to November 2015 are: Turkey with (2.5 %), Greece with (12.7 %) and Germany with (0.6 %). While, countries with which has had a decrease of imports are: Italy with (-9.5 %), China with (-14.1 %) and Serbia with (-35.1 %).

**Fig.4 Foreign Trade in Goods by several EU countries, November 2016**



Trade with the EU countries is 64.6 % of total trade. In November 2016, exports to EU countries occupied 73.4 % of total export and imports from EU countries occupied 60.5 % of total import. The main trade partners remain Italy (36.4 %), China (7.5 %), Greece (6.6 %) and Turkey (6.3 %).

Tab. 1 Flow of goods (billion ALL)

Years	Months	Exports	Annual Change (%)	Imports	Annual Change (%)	Trade Balance	Percentage of cover
2000		37	-23.5	157	-1.5	-120	23.6
2001		44	19.1	190	21.0	-146	23.2
2002		47	7.7	210	10.6	-163	22.6
2003		54	14.7	226	7.4	-171	24.1
2004		62	14.0	236	4.5	-174	26.3
2005		66	6.0	262	11.1	-196	25.1
2006		77	17.6	299	14.1	-222	25.9
2007		97	25.5	376	25.8	-279	25.8
2008		113	15.8	440	16.9	-327	25.6
2009		105	-7.2	429	-2.5	-324	24.4
2010		162	54.6	478	11.4	-316	33.8
2011		197	21.9	544	13.9	-347	36.2
2012		213	8.2	528	-2.9	-315	40.3
2013		246	15.7	517	-2.1	-271	47.6
2014		256	3.8	552	6.7	-297	46.3
2015		243	-4.9	545	-1.4	-301	44.7
2014	01 - 14	18	-1.4	35	2.2	-17	51.2
	02 - 14	20	27.9	39	17.5	-19	51.8
	03 - 14	21	10.4	42	11.1	-21	50.1
	04 - 14	23	10.3	44	6.8	-22	51.3
	05 - 14	25	9.1	48	6.9	-23	52.5
	06 - 14	22	8.3	49	18.9	-27	45.6
	07 - 14	23	-5.7	47	-2.5	-24	48.6
	08 - 14	19	2.3	45	5.2	-26	41.7
	09 - 14	21	-0.2	47	12.5	-26	45.0
	10 - 14	22	-0.2	52	12.3	-30	42.5
	11 - 14	21	1.8	48	7.1	-27	44.5
	12 - 14	19	-9.9	54	-8.4	-35	35.7
2015	01 - 15	18	-0.6	35	0.9	-17	50.4
	02 - 15	18	-9.4	39	-0.8	-20	47.3
	03 - 15	22	4.1	44	4.6	-22	49.9
	04 - 15	21	-8.5	44	-1.4	-23	47.6
	05 - 15	24	-4.8	44	-8.0	-20	54.3
	06 - 15	24	7.4	49	-0.8	-25	49.3
	07 - 15	23	-1.6	52	11.1	-30	43.0
	08 - 15	15	-17.3	40	-10.0	-25	38.3
	09 - 15	20	-4.3	44	-7.1	-24	46.3
	10 - 15	20	-9.3	50	-4.2	-30	40.2
	11 - 15	19	-8.9	49	1.9	-30	39.7
	12 - 15	18	-7.6	53	-1.7	-35	33.5
2016	01 - 16	16	-7.8	35	-1.0	-18	47.0
	02 - 16	18	-4.4	42	7.6	-24	42.0
	03 - 16	19	-12.7	47	5.6	-28	41.2
	04 - 16	21	1.7	52	19.0	-31	40.7
	05 - 16	21	-14.8	52	16.7	-31	39.6
	06 - 16	23	-6.4	52	6.2	-29	43.5
	07 - 16	23	-0.2	50	-4.5	-28	44.9
	08 - 16	16	6.9	47	15.9	-30	35.3
	09 - 16	21	0.9	48	9.3	-28	42.8
	10 - 16	22	7.3	50	-0.8	-28	43.5
	11 - 16	23	17.4	49	0.6	-26	46.4

**Tab.2 Foreign trade in goods by partner countries (million ALL)**

	Exports				Imports			
	Nov-15	Nov-16	Jan-Nov 2015	Jan-Nov 2016	Nov-15	Nov-16	Jan-Nov 2015	Jan-Nov 2016
<b>EU countries</b>	<b>15,616</b>	<b>16,772</b>	<b>168,709</b>	<b>174,274</b>	<b>30,270</b>	<b>29,851</b>	<b>303,114</b>	<b>329,922</b>
Austria	111	161	2,822	1,102	1,119	427	6,780	6,035
United Kingdom	28	105	445	482	343	373	4,512	3,774
Germany	666	802	6,953	7,565	3,522	3,544	31,994	48,949
Greece	896	926	8,653	10,090	3,404	3,837	39,047	41,524
Italy	10,733	12,095	113,396	122,879	15,628	14,145	149,119	152,901
Spain	824	883	11,382	6,570	768	1,201	7,630	11,727
Croatia	62	78	450	882	646	488	6,951	3,941
Others of EU	2,296	1,720	24,608	24,703	4,841	5,837	57,081	61,071
China	518	1,231	6,130	6,176	4,849	4,164	41,906	45,464
Kosovo	1,226	1,350	19,552	14,869	337	570	5,060	5,233
Macedonia	476	624	6,075	5,876	834	650	7,726	6,954
Russia	-	-	50	61	969	1,362	10,957	10,300
USA	66	122	2,011	1,477	342	683	7,796	9,688
Turkey	202	521	6,738	2,181	3,949	4,047	38,690	41,526
Ukraine	17	4	167	203	437	308	3,235	3,207
Switzerland	27	411	2,392	2,360	316	559	7,447	6,422
Others	1,320	1,821	13,543	14,172	6,713	7,114	65,506	64,554
<b>Total</b>	<b>19,468</b>	<b>22,857</b>	<b>225,366</b>	<b>221,648</b>	<b>49,017</b>	<b>49,307</b>	<b>491,436</b>	<b>523,271</b>

**Tab. 3 Foreign trade by group of goods (million ALL)**

Group of goods	Exports				Imports			
	Nov-15	Nov-16	Jan-Nov 2015	Jan-Nov 2016	Nov-15	Nov-16	Jan-Nov 2015	Jan-Nov 2016
<b>Total</b>	<b>19,468</b>	<b>22,857</b>	<b>225,366</b>	<b>221,648</b>	<b>49,017</b>	<b>49,307</b>	<b>491,436</b>	<b>523,271</b>
Food, beverages, tobacco	2,491	2,774	19,087	23,201	7,833	8,368	87,877	91,108
Minerals, fuels, electricity	4,003	5,144	60,608	41,112	5,588	4,491	55,051	45,528
Chemical and plastic products	262	414	3,682	4,050	5,572	6,037	68,140	72,438
Leather and leather manuf.	280	238	2,582	2,453	1,629	1,540	14,589	15,846
Wood manufct. and art. of paper	864	797	7,700	7,056	2,185	2,204	19,978	21,364
Textile and footwear	7,946	9,050	82,684	98,302	6,966	7,234	62,382	72,418
Construct. materials and metals	2,413	2,733	33,269	28,581	5,623	5,543	61,542	68,633
Machinery, equipm. spare parts	693	1,068	10,049	10,409	11,701	11,826	103,884	116,736
Others	517	639	5,705	6,485	1,919	2,064	17,993	19,199

**Tab. 4 Exports of group of goods and main partners (Jan.-Nov. 2015, Jan.-Nov. 2016 )****(million ALL)**

Group of goods	Italy		Kosovo		Greece		Germany	
	2015	2016	2015	2016	2015	2016	2015	2016
<b>Total</b>	<b>113,396</b>	<b>122,879</b>	<b>19,552</b>	<b>14,869</b>	<b>8,653</b>	<b>10,090</b>	<b>6,953</b>	<b>7,565</b>
Food, beverages, tobacco	6,266	7,401	1,977	2,250	2,023	2,116	1,099	1,095
Minerals, fuels, electricity	10,645	8,219	8,278	3,174	679	394	75	216
Chemical and plastical products	1,125	1,188	1,048	1,180	316	402	8	315
Leather and leather manuf.	2,283	2,188	2	0	25	61	16	7
Wood manufct.and art. of paper	5,899	5,223	293	296	683	829	98	83
Textile and footwear	66,920	77,738	77	81	3,410	4,265	4,469	4,834
Construct. materials and metals	12,161	11,390	6,367	6,123	1,176	1,523	603	298
Machinery, equipm. spare parts	5,622	6,816	484	625	66	131	392	476
Others	2,474	2,716	1,026	1,138	275	370	194	240

**Tab. 5 Imports of group of goods and main partners (Jan.-Nov. 2015, Jan.-Nov. 2016 )****(million ALL)**

Group of goods	Italy		Germany		China		Turkey	
	2015	2016	2015	2016	2015	2016	2015	2016
<b>Total</b>	<b>149,119</b>	<b>152,901</b>	<b>31,994</b>	<b>48,949</b>	<b>41,906</b>	<b>45,464</b>	<b>38,690</b>	<b>41,526</b>
Food, beverages, tobacco	15,549	15,621	3,568	4,010	517	509	3,844	4,817
Minerals, fuels, electricity	23,973	17,052	429	474	44	746	680	1,002
Chemical and plastical products	13,520	15,327	6,220	6,002	3,541	3,933	5,443	5,819
Leather and leather manuf.	11,450	12,413	50	4	711	699	245	332
Wood manufct.and art. of paper	6,399	5,907	771	794	759	897	2,487	3,015
Textile and footwear	31,949	36,356	2,132	2,379	8,087	8,953	11,062	13,576
Construct. materials and metals	16,807	15,259	913	12,602	7,828	7,983	7,510	5,591
Machinery, equipm. spare parts	24,846	29,882	16,729	21,140	16,903	17,760	5,714	5,617
Others	4,625	5,084	1,183	1,542	3,514	3,984	1,706	1,757

# DEFINITIONS

Exports are goods destined to a third country, placed under customs export or outward processing arrangements or re-exported following inward processing.

The FOB (free on board) value of exports of goods is the value of the goods at the exporter's customs frontier.

Imports are goods arrived from a third country and are directly placed, or are left in warehouse, under customs procedure of release for free circulation, inward processing or processing under customs control.

The cost, insurance and freight (CIF) price is the price of a good delivered at the frontier of the importing country, or the price of a service delivered to a resident, before the payment of any import duties or other taxes on imports or trade and transport margins within the country.

Combined Nomenclature ( CN) is a goods nomenclature used by international trade in goods statistics and for customs tariffs.

Member State of European Union Belgium, Germany, France, Italy, Luxembourg, Netherlands, United Kingdom, Denmark, Ireland, Greece, Spain, Portugal, Austria, Finland, Sweden, Cyprus, Czech Republic, Estonia, Hungary, Latvia, Lithuania, Malta, Poland, Slovakia, Slovenia, Bulgaria, Romania, Croatia.

## **Explanation of Symbols**

0 value less than half of unit of measure

- no value

÷ up to