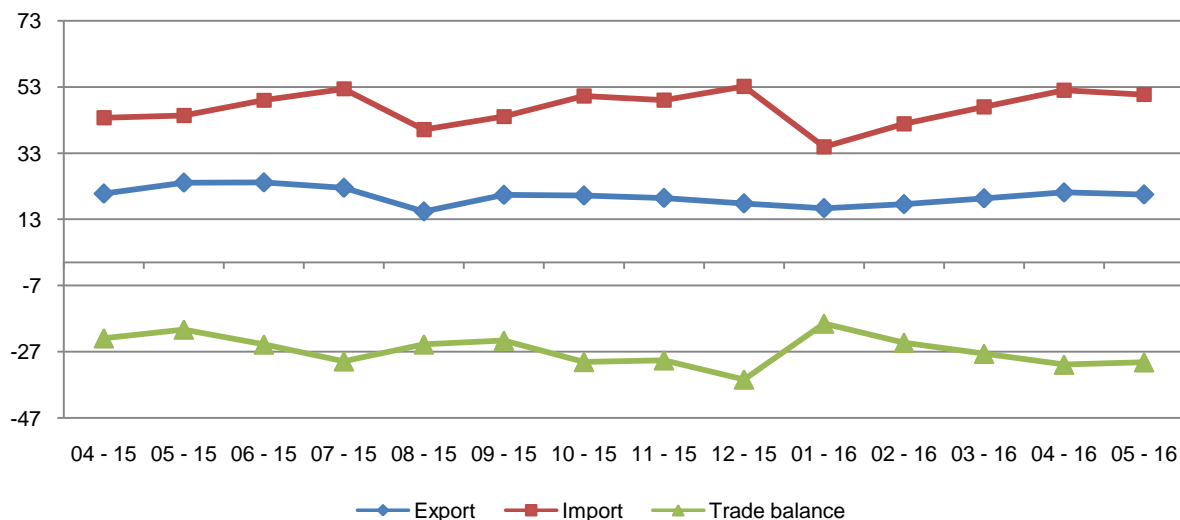


Foreign Trade in Goods

May, 2015

Tirana, June 28, 2016: On May 2016 the value of exports was 21 billion lekë, decreasing by 14.8 % compared with May 2015 and by 2.9 % compared with April 2016. The value of imports in May 2016, was 51 billion lekë, increasing by 14.2 % compared with May 2015 and decreasing 2.5 % compared with April 2016. This month the trade deficit is 30 billion lekë signing an increase by 48.6 % compared with May 2015 and an decrease by 2.3 % compared with April 2016.

Fig.1 Flow of goods, March 2015 – April 2016 (billionALL)

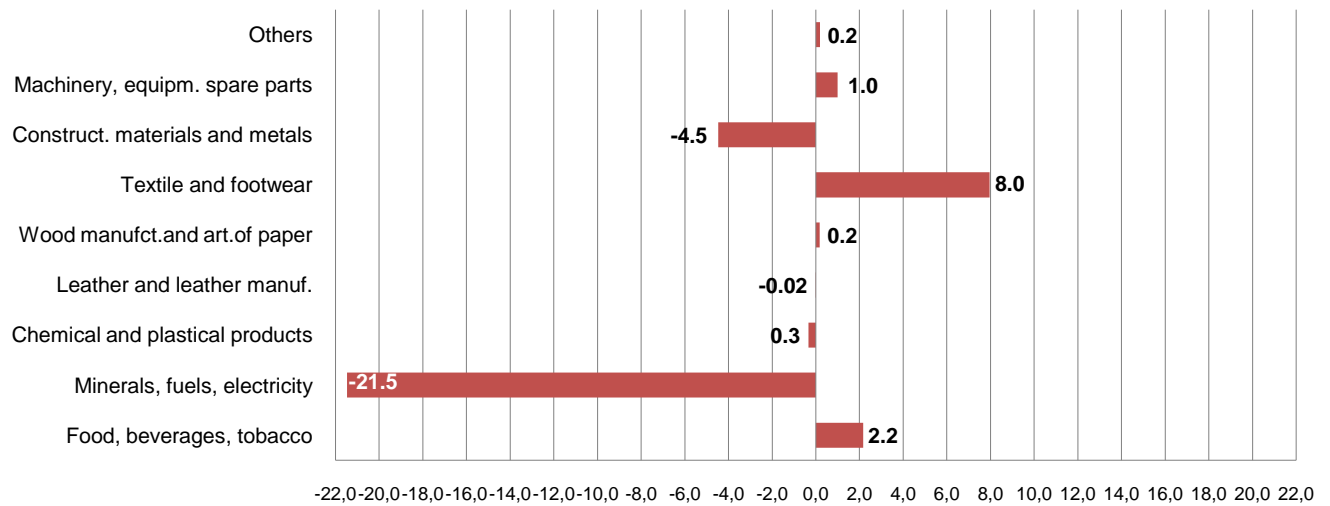


The influence of the main groups in the annual change in exports:

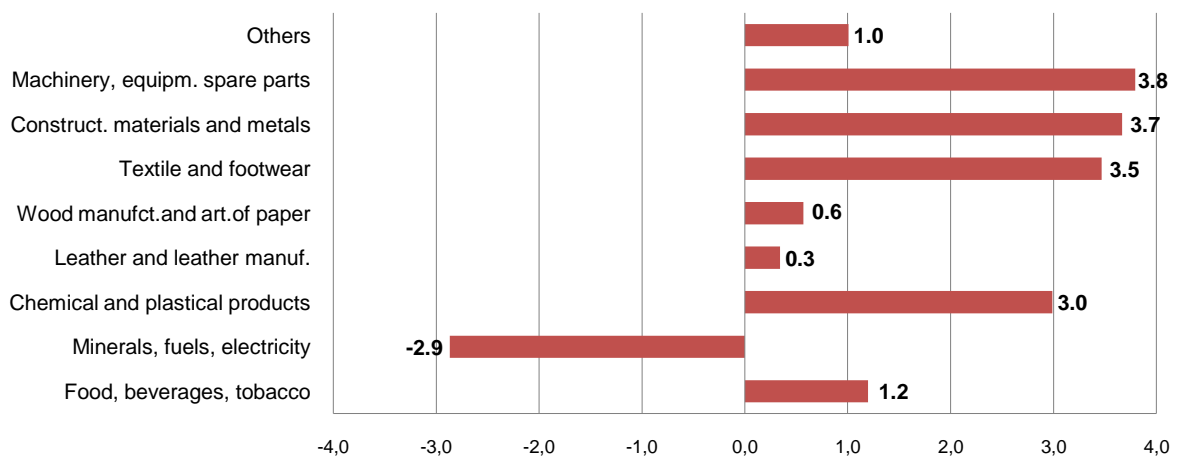
In annual decrease of exports by 14.8 % this month a positive contribution was given by the groups: "Minerals, fuels, electricity" with -21.5 percentage point, "Construction materials and metals" with -4.5 percentage point and "Chemical and plastical products" with -0.3 percentage point. While a positive contribution was given by the groups: "Textile and footwear" with +8.0 percentage point, "Food, beverages, tobacco" with +2.2 percentage point, "Machinery, equipment spare parts" with +1.0 percentage point.

For release 28/06/2016

Continue

Fig.2 Annual impact of groups in exports**The influence of the main groups in the annual change in imports:**

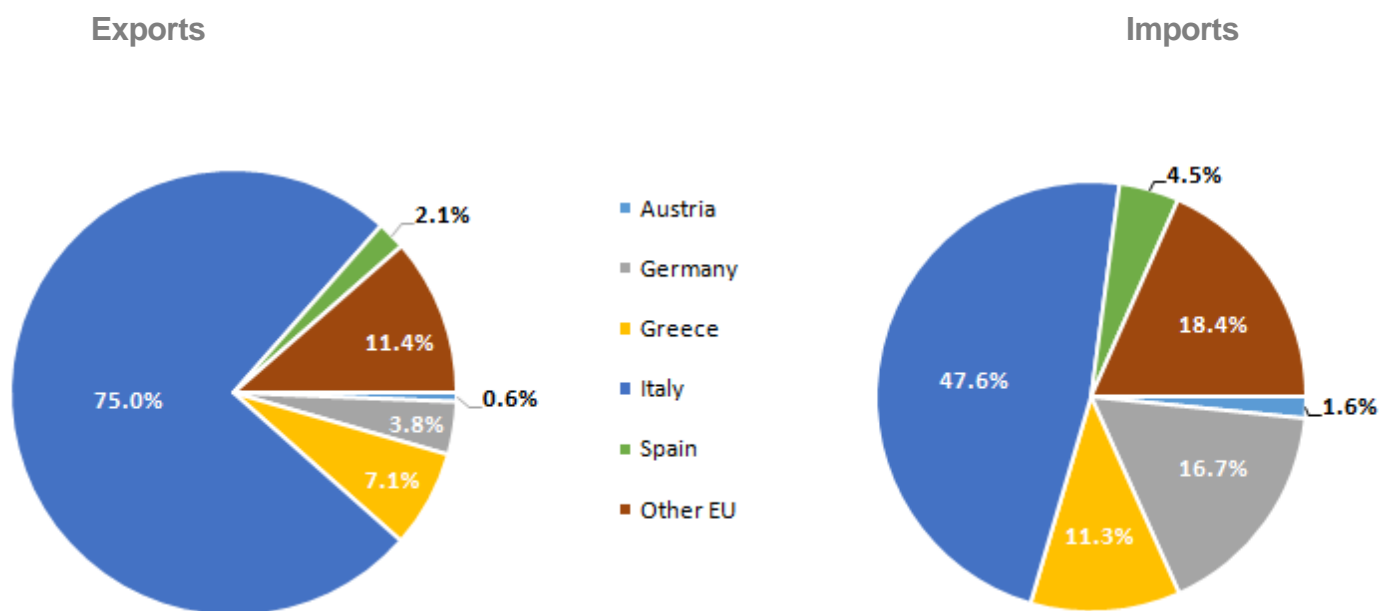
In annual increase of imports by 14.2 % in May 2016 a positive contribution was given by the groups: "Machinery, equipment spare parts" with +3.8 percentage point, "Construction materials and metals" with +3.7 percentage point, "Textile and footwear" with +3.5 percentage point. While a negative contribution was given by the group: "Machinery, equipment spare parts" with -2.9 percentage point.

Fig.3 Annual impact of groups in imports

In May 2016, countries with which Albania has had the highest increase of exports, compared to May 2015 are: Italy with 5.8 %, Greece with 22.8 % and Serbia 44.8 %. While, countries with which has had a decrease of exports are: Kosovo with 44.6 %, Germany with 16.2 % and Macedonia me 21.7 %.

In May 2016, countries with which Albania has had the highest increase of imports, compared to May 2015 are: Germany with 90.5 %, China with 97.4 % and Turkey with 9.3 %. While, countries with which has had a decrease of imports are: Italy with 0.3 %, Greece with 9.8 % and Serbia with 12.4 %.

Fig.4 Foreign Trade in Goods by several EU countries, April 2016



Trade with the EU countries is 68.2 % of total trade. In May 2016, exports to EU countries occupied 76.4 % of total export and imports from EU countries occupied 64.9 % of total import.

The main trade partners remain Italy (38.5 %), Germany (8.6 %), China (7.7 %) and Greece (6.8 %).

Tab. 1 Flow of goods (million ALL)

Years	Months	Exports	Imports	Trade Balance	Percentage of cover
2000		37,037	157,109	-120,072	23.6
2001		44,096	190,155	-146,059	23.2
2002		47,490	210,368	-162,878	22.6
2003		54,487	225,983	-171,496	24.1
2004		62,121	236,072	-173,951	26.3
2005		65,818	262,191	-196,373	25.1
2006		77,405	299,147	-221,742	25.9
2007		97,171	376,194	-279,023	25.8
2008		112,572	439,894	-327,322	25.6
2009		104,515	428,839	-324,324	24.4
2010		161,548	477,768	-316,220	33.8
2011		196,897	544,004	-347,108	36.2
2012		213,030	528,490	-315,460	40.3
2013		246,397	517,378	-270,981	47.6
2014		255,759	552,279	-296,520	46.3
2015		243,183	544,593	-301,410	44.7
2014	01 - 14	17,869	34,922	-17,053	51.2
	02 - 14	20,304	39,193	-18,889	51.8
	03 - 14	21,302	42,478	-21,176	50.1
	04 - 14	22,720	44,308	-21,588	51.3
	05 - 14	25,317	48,241	-22,924	52.5
	06 - 14	22,490	49,351	-26,860	45.6
	07 - 14	22,911	47,158	-24,247	48.6
	08 - 14	18,582	44,601	-26,019	41.7
	09 - 14	21,324	47,402	-26,078	45.0
	10 - 14	22,269	52,436	-30,167	42.5
	11 - 14	21,380	48,080	-26,700	44.5
	12 - 14	19,290	54,108	-34,818	35.7
2015	01 - 15	17,763	35,245	-17,482	50.4
	02 - 15	18,392	38,889	-20,497	47.3
	03 - 15	22,179	44,437	-22,258	49.9
	04 - 15	20,783	43,696	-22,913	47.6
	05 - 15	24,098	44,382	-20,284	54.3
	06 - 15	24,158	48,956	-24,798	49.3
	07 - 15	22,540	52,411	-29,871	43.0
	08 - 15	15,376	40,126	-24,750	38.3
	09 - 15	20,403	44,027	-23,624	46.3
	10 - 15	20,204	50,249	-30,044	40.2
	11 - 15	19,468	49,017	-29,549	39.7
	12 - 15	17,817	53,157	-35,340	33.5
2016	01 - 16	16,380	34,879	-18,499	47.0
	02 - 16	17,592	41,841	-24,249	42.0
	03 - 16	19,361	46,937	-27,576	41.2
	04 - 16	21,129	51,979	-30,850	40.6
	05 - 16	20,524	50,668	-30,144	40.5

Tab.2 Foreign trade in goods by partner countries (million ALL)

	Exports				Imports			
	May-15	May-16	Jan-May 2015	Jan-May 2016	May-15	May-16	Jan-May 2015	Jan-May 2016
EU countries	16,955	15,690	73,157	76,233	29,378	32,897	126,751	143,072
Austria	233	101	1,999	509	709	526	2,472	2,247
United Kingdom	9	67	250	179	313	406	1,752	1,654
Germany	715	599	2,940	3,247	2,881	5,489	13,390	22,299
Greece	902	1,107	3,873	4,364	4,108	3,706	17,516	17,587
Italy	11,126	11,767	50,402	55,004	15,697	15,650	64,032	68,048
Spain	921	324	4,259	2,061	618	1,482	2,724	4,729
Croatia	33	369	156	566	396	272	1,869	1,511
Others of EU	3,018	1,356	9,277	10,302	4,655	5,366	22,996	24,997
China	730	515	3,277	1,847	2,528	4,991	18,310	20,012
Kosovo	2,725	1,510	9,847	6,513	518	583	2,221	2,123
Macedonia	713	558	2,643	2,217	690	686	3,159	2,776
Russia	9	45	11	46	1,089	629	4,121	4,757
USA	107	119	1,365	593	694	794	4,342	3,567
Turkey	715	96	4,753	458	3,312	3,619	15,729	17,387
Ukraine	33	24	39	69	185	457	1,290	1,817
Switzerland	148	127	1,170	1,067	367	514	3,592	3,292
Others	1,963	1,841	6,953	5,942	5,621	5,498	27,133	27,499
Total	24,098	20,524	103,216	94,985	44,382	50,668	206,649	226,303

Tab. 3 Foreign trade by group of goods (million ALL)

Group of goods	Exports				Imports			
	May-15	May-16	Jan-May 2015	Jan-May 2016	May-15	May-16	Jan-May 2015	Jan-May 2016
Total	24,098	20,524	103,216	94,985	44,382	50,668	206,649	226,303
Food, beverages, tobacco	2,137	2,659	7,150	9,539	7,778	8,309	36,912	39,158
Minerals, fuels, electricity	8,243	3,068	29,326	15,276	4,993	3,720	23,363	18,957
Chemical and plastical products	431	349	1,671	1,730	5,903	7,230	29,293	31,996
Leather and leather manuf.	226	221	1,119	1,197	1,783	1,934	6,198	7,014
Wood manufct. and art. of paper	623	665	3,411	3,182	1,615	1,867	7,784	8,832
Textile and footwear	7,319	9,236	35,650	44,282	6,063	7,602	26,276	32,074
Construct. materials and metals	3,676	2,598	16,881	12,317	5,739	7,366	26,217	32,832
Machinery, equipm. spare parts	876	1,116	5,592	4,671	8,753	10,437	42,899	47,456
Others	567	612	2,415	2,792	1,756	2,202	7,704	7,983

Tab. 4 Exports of group of goods and main partners, January-May 2016 (million ALL)

Group of goods	Italy	Kosovo	Greece	Germany	Others
Total	55,004	6,513	4,364	3,247	25,858
Food, beverages, tobacco	2,892	1,096	866	406	4,279
Minerals, fuels, electricity	2,576	1,266	192	100	11,143
Chemical and plastical products	569	552	136	116	356
Leather and leather manuf.	1,079	0	23	3	92
Wood manufct.and art. of paper	2,421	114	343	41	263
Textile and footwear	35,980	25	1,896	2,120	4,260
Construct. materials and metals	5,126	2,708	731	219	3,533
Machinery, equipm. spare parts	3,111	270	32	168	1,090
Others	1,249	483	145	73	842

Tab. 5 Imports of group of goods and main partners, January-May 2016 (million ALL)

Group of goods	Italy	Germany	China	Greece	Others
Total	68,048	22,299	20,012	17,587	98,358
Food, beverages, tobacco	6,897	1,668	198	6,072	24,324
Minerals, fuels, electricity	7,231	235	498	1,377	9,615
Chemical and plastical products	6,694	2,469	1,609	3,037	18,187
Leather and leather manuf.	5,595	2	285	50	1,084
Wood manufct.and art. of paper	2,587	325	379	988	4,552
Textile and footwear	16,693	1,037	3,710	1,480	9,154
Construct. materials and metals	6,972	7,057	4,477	2,812	11,515
Machinery, equipm. spare parts	13,199	8,932	7,290	1,151	16,884
Others	2,181	574	1,566	619	3,043

DEFINITIONS

Exports are goods destined to a third country, placed under customs export or outward processing arrangements or re-exported following inward processing.

The FOB (free on board) value of exports of goods is the value of the goods at the exporter's customs frontier.

Imports are goods arrived from a third country and are directly placed, or are left in warehouse, under customs procedure of release for free circulation, inward processing or processing under customs control.

The cost, insurance and freight (CIF) price is the price of a good delivered at the frontier of the importing country, or the price of a service delivered to a resident, before the payment of any import duties or other taxes on imports or trade and transport margins within the country.

Combined Nomenclature (CN) is a goods nomenclature used by international trade in goods statistics and for customs tariffs.

Member State of European Union Belgium, Germany, France, Italy, Luxembourg, Netherlands, United Kingdom, Denmark, Ireland, Greece, Spain, Portugal, Austria, Finland, Sweden, Cyprus, Czech Republic, Estonia, Hungary, Latvia, Lithuania, Malta, Poland, Slovakia, Slovenia, Bulgaria, Romania, Croatia.

Explanation of Symbols

0 value less than half of unit of measure

- no value

÷ up to