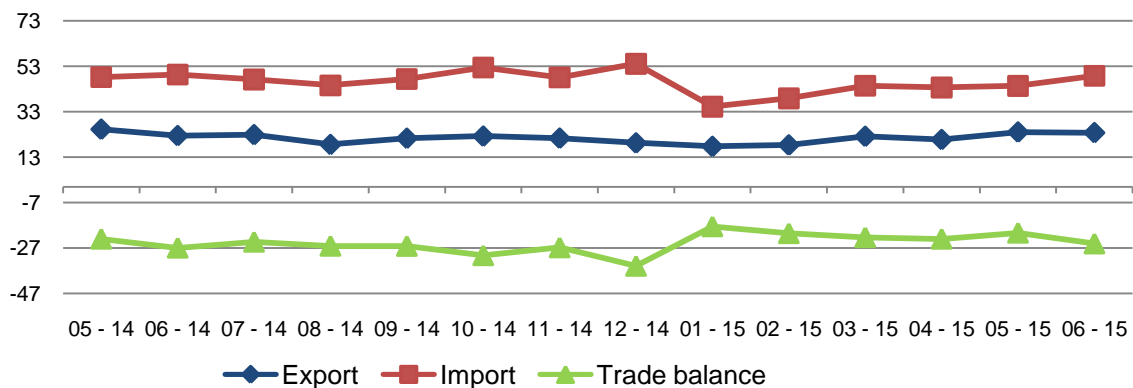


Foreign Trade in Goods

June, 2015

Tirana, July 28, 2015: On June 2015 the value of exports was 24 billion lekë, increasing by 5.8 % compared with June 2014 and decreasing 1.2 % compared with May 2015. The value of imports in June 2015, was 49 billion lekë, decreasing by 1.1 % compared with June 2014 and increasing by 10.0 % compared with May 2015. This month the trade deficit is 25 billion lekë signing an decrease by 6.9 % compared with June 2014 and increasing by 23.3 % compared with May 2015.

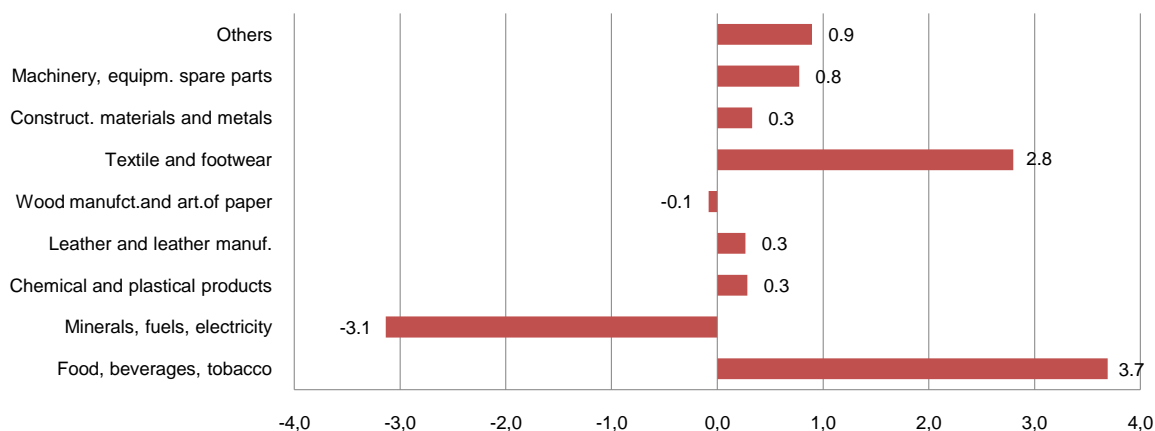
Fig.1 Flow of goods, May 2014– June 2015 (billionALL)



The influence of the main groups in the annual change in exports:

Annual increase of exports by 5.8 % this month is influenced by groups: “Food, beverages, tobacco” contributed with +3.7 percentage point , “Textile and footwear” contributed with +2.8 percentage point, “Machinery, equipment, spare parts” contributed with +0.8 percentage point, “Minerals, fuels, electricity” contributed with -3.1 percentage point, “Wood manufacture and article of paper” contributed with -0.1 percentage point.

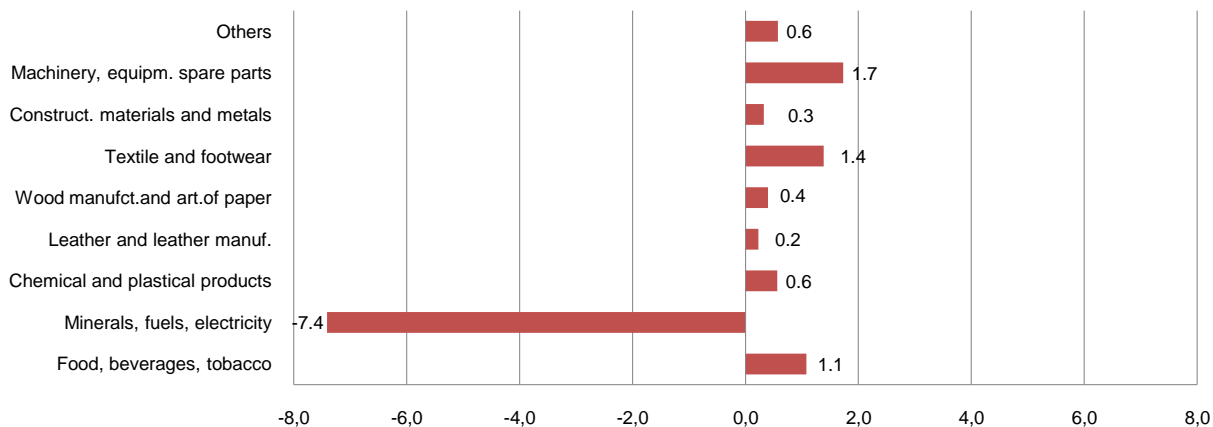
Fig.2 Annual impact of groups in exports



The influence of the main groups in the annual change in imports:

Annual decrease by 1.1 % in June 2015 is influenced by groups: “Machinery, equipment, spare parts” contributed with +1.7 percentage point, “Textile and footwear” contributed with +1.4 percentage point, “Food, beverages, tobacco” contributed with +1.1 percentage point, “Minerals, fuels, electricity” contributed with -7.4 percentage point.

Fig.3 Annual impact of groups in imports



Trade with the EU countries is 67.6 % of total trade. In June 2015, exports to EU countries occupied 73.2 % of total export and imports from EU countries occupied 64.8 % of total import.

The main trade partners remain Italy (34.8 %), Greece (7.6 %), Turkey (5.8 %) and China (5.4 %).

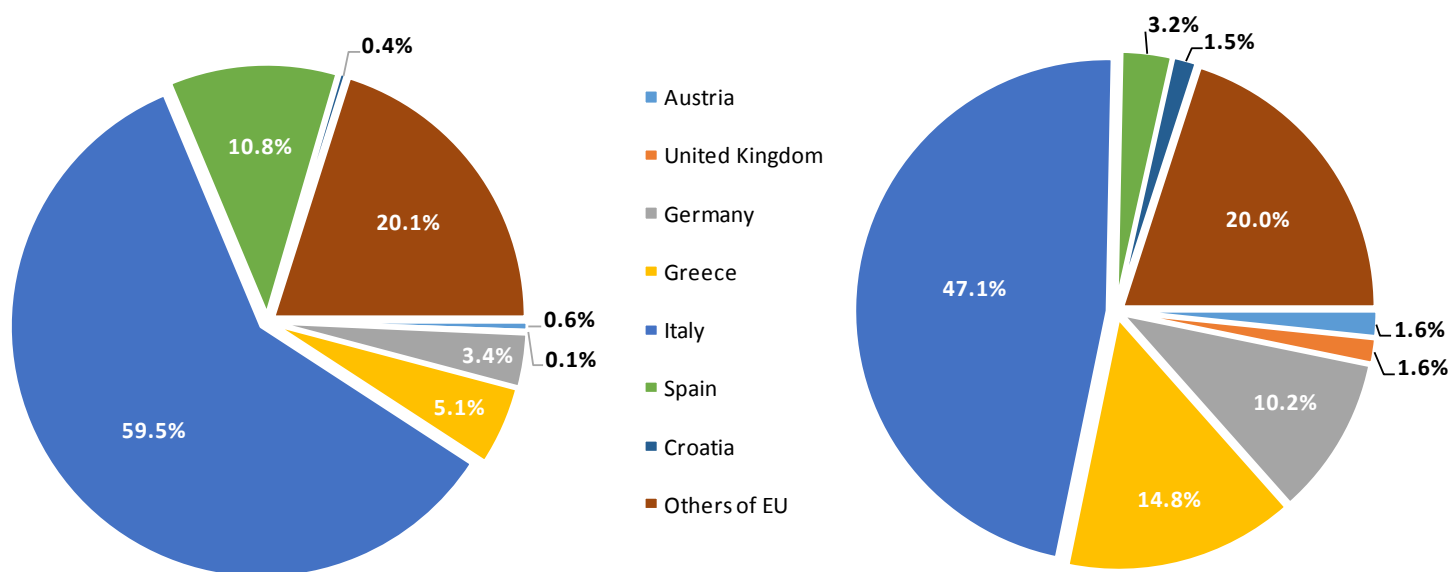
In June 2015, countries with which Albania has had the highest increase of exports, compared to June 2014 are: Kosovo with 32.2 %, Spain with 31.4 % and Greece with 11.5 %. While, countries with which has had a decrease of exports are: Italy with 9.6 %, Germany with 7.2 % and 5.7 % Malta.

In June 2015, countries with which Albania has had the highest increase of imports, compared to June 2014 are: China with 13.3 %, Greece with 7.2 % and Italy with 1.7 %. While, countries with which has had a decrease of imports are: Serbia with 27.7 %, Macedonia with 4.1 % and Turkey with 1.3 %.

Fig.4 Foreign Trade in Goods by EU countries, June 2015

Exports

Imports



Tab. 1 Flow of goods (million ALL)

Years	Months	Exports	Imports	Trade Balance	Percentage of cover
2000		37,037	157,109	-120,072	23.6
2001		44,096	190,155	-146,059	23.2
2002		47,490	210,368	-162,877	22.6
2003		54,487	225,983	-171,496	24.1
2004		62,121	236,072	-173,951	26.3
2005		65,818	262,191	-196,373	25.1
2006		77,405	299,147	-221,742	25.9
2007		97,171	376,194	-279,023	25.8
2008		112,572	439,894	-327,322	25.6
2009		104,515	428,839	-324,324	24.4
2010		161,548	477,768	-316,220	33.8
2011		196,897	544,004	-347,108	36.2
2012		213,030	528,490	-315,460	40.3
2013		246,391	517,378	-270,987	47.6
2014		255,759	552,276	-296,517	46.3
2013	01 - 13	18,128	34,159	-16,031	53.1
	02 - 13	15,876	33,351	-17,475	47.6
	03 - 13	19,301	38,229	-18,928	50.5
	04 - 13	20,600	41,499	-20,899	49.6
	05 - 13	23,201	45,130	-21,929	51.4
	06 - 13	20,761	41,500	-20,739	50.0
	07 - 13	24,288	48,385	-24,097	50.2
	08 - 13	18,155	42,402	-24,247	42.8
	09 - 13	21,360	42,121	-20,761	50.7
	10 - 13	22,301	46,679	-24,378	47.8
	11 - 13	21,008	44,876	-23,868	46.8
	12 - 13	21,411	59,045	-37,634	36.3
2014	01 - 14	17,869	34,922	-17,053	51.2
	02 - 14	20,304	39,193	-18,890	51.8
	03 - 14	21,302	42,478	-21,176	50.1
	04 - 14	22,720	44,308	-21,588	51.3
	05 - 14	25,317	48,241	-22,924	52.5
	06 - 14	22,490	49,351	-26,860	45.6
	07 - 14	22,911	47,158	-24,247	48.6
	08 - 14	18,582	44,601	-26,019	41.7
	09 - 14	21,324	47,402	-26,078	45.0
	10 - 14	22,269	52,436	-30,167	42.5
	11 - 14	21,380	48,080	-26,700	44.5
	12 - 14	19,290	54,106	-34,816	35.7
2015	01 - 15	17,763	35,237	-17,474	50.4
	02 - 15	18,392	38,889	-20,497	47.3
	03 - 15	22,179	44,437	-22,258	49.9
	04 - 15	20,764	43,696	-22,932	47.5
	05 - 15	24,098	44,375	-20,277	54.3
	06 - 15	23,801	48,804	-25,003	48.8

Tab.2 Foreign trade in goods by partner countries (million ALL)

	Exports				Imports			
	June-14	June-15	Jan-June 2014	Jan-June 2015	June-14	June-15	Jan-June 2014	Jan-June 2015
EU countries	17,490	17,429	103,004	90,567	29,654	31,642	154,308	158,378
Austria	172	97	779	2,096	506	522	3,135	2,993
United Kingdom	16	26	101	276	474	501	2,463	2,253
Germany	643	597	2,968	3,537	2,708	3,239	15,139	16,630
Greece	793	884	4,505	4,757	4,355	4,669	25,651	22,180
Italy	11,467	10,362	70,705	60,746	14,653	14,900	74,380	78,931
Spain	1,433	1,883	9,151	6,141	903	1,007	4,000	3,731
Croatia	28	63	165	220	779	469	2,939	2,339
Others of EU	2,938	3,517	14,630	12,794	5,275	6,335	26,600	29,322
China	690	554	4,912	3,831	2,991	3,388	17,231	21,698
Kosovo	1,596	2,109	7,622	11,956	485	563	2,741	2,785
Macedonia	459	631	2,317	3,274	732	702	3,771	3,862
Russia	6	14	9	25	1,300	725	5,658	4,846
USA	8	91	608	1,457	1,979	683	7,959	5,026
Turkey	901	584	5,254	5,337	3,705	3,656	18,520	19,385
Ukraine	-	34	16	73	387	359	2,118	1,649
Switzerland	245	602	1,009	1,773	1,138	399	9,990	3,991
Others	1,096	1,751	5,250	8,704	6,980	6,686	36,199	33,818
Total	22,490	23,801	130,002	126,997	49,351	48,804	258,494	255,437

Tab. 3 Foreign trade by group of goods (million ALL)

Group of goods	Exports				Imports			
	June-14	June-15	Jan-June 2014	Jan-June 2015	June-14	June-15	Jan-June 2014	Jan-June 2015
Total	22,490	23,801	130,002	126,997	49,351	48,804	258,494	255,437
Food, beverages, tobacco	1,311	2,141	7,200	9,291	8,253	8,786	43,268	45,698
Minerals, fuels, electricity	8,264	7,559	47,103	36,867	8,165	4,509	44,968	27,872
Chemical and plastical products	319	383	1,674	2,055	7,628	7,907	35,005	37,192
Leather and leather manuf.	260	319	1,561	1,438	1,660	1,774	7,309	7,972
Wood manuf.and art. of paper	647	629	4,362	4,039	2,114	2,313	10,500	10,097
Textile and footwear	7,454	8,083	43,340	43,733	5,434	6,119	30,799	32,390
Construct. materials and metals	3,179	3,253	18,377	20,135	5,933	6,093	32,554	32,310
Machinery, equipm. spare parts	623	798	4,120	6,389	8,599	9,453	45,588	52,352
Others	433	635	2,266	3,050	1,565	1,849	8,501	9,553

Tab. 4 Exports of group of goods and main partners, January - June 2015 (million ALL)

Group of goods	Italy	Kosovo	Spain	Turkey	Others
Total	60,746	11,956	6,141	5,337	42,817
Food, beverages, tobacco	2,783	1,112	311	134	4,951
Minerals, fuels, electricity	5,442	6,052	5,130	1,042	19,200
Chemical and plastical products	621	583	1	107	742
Leather and leather manuf.	1,263	-	5	48	123
Wood manufct.and art. of paper	3,129	132	1	60	716
Textile and footwear	36,133	41	408	40	7,110
Construct. materials and metals	7,017	3,242	281	3,800	5,795
Machinery, equipm. spare parts	3,055	234	4	38	3,059
Others	1,302	560	1	66	1,121

Tab. 5 Imports of group of goods and main partners, January – June 2015 (million ALL)

Group of goods	Italy	Greece	China	Turkey	Others
Total	78,931	22,180	21,698	19,385	113,244
Food, beverages, tobacco	8,448	6,494	278	2,201	28,277
Minerals, fuels, electricity	11,486	4,414	33	356	11,582
Chemical and plastical products	6,996	3,435	1,951	2,874	21,936
Leather and leather manuf.	6,364	47	352	141	1,070
Wood manufct.and art. of paper	3,512	1,078	383	1,104	4,020
Textile and footwear	17,161	1,508	3,709	5,641	4,372
Construct. materials and metals	9,148	3,123	4,438	3,210	12,391
Machinery, equipm. spare parts	13,468	1,394	8,687	2,923	25,880
Others	2,349	688	1,868	935	3,714

DEFINITIONS

Exports are goods destined to a third country, placed under customs export or outward processing arrangements or re-exported following inward processing.

The FOB (free on board) value of exports of goods is the value of the goods at the exporter's customs frontier.

Imports are goods arrived from a third country and are directly placed, or are left in warehouse, under customs procedure of release for free circulation, inward processing or processing under customs control.

The cost, insurance and freight (CIF) price is the price of a good delivered at the frontier of the importing country, or the price of a service delivered to a resident, before the payment of any import duties or other taxes on imports or trade and transport margins within the country.

Combined Nomenclature (CN) is a goods nomenclature used by international trade in goods statistics and for customs tariffs.

Member State of European Union Belgium, Germany, France, Italy, Luxembourg, Netherlands, United Kingdom, Denmark, Ireland, Greece, Spain, Portugal, Austria, Finland, Sweden, Cyprus, Czech Republic, Estonia, Hungary, Latvia, Lithuania, Malta, Poland, Slovakia, Slovenia, Bulgaria, Romania, Croatia.

Explanation of Symbols

0 value less than half of unit of measure

- no value

÷ up to