

Consumer Price Index

December, 2015

Tirana, on January 08, 2016: Consumer Price Index in December 2015 arrived 119.3 % considerate December 2007 as base period.

In December 2015 the annual rate of consumer price is 2.0 %. A year before the annual rate was 0.7 %.

Contribution of main groups in yearly changes of CPI: Annual growth rate in December was push up mainly from “Food and non-alcoholic beverage” group by +2.0 p.p. Higher prices of “Alcoholic beverages and tobacco” group contributed by +0.12 p.p.. Prices of “Education service” group contributed by + 0.07 p.p. in annual rate. Prices of “Hotel, coffee-house and restaurants” and “Recreation and culture” groups contributed respectively by +0.04 and +0.03 p.p.. Price of “Housing, water, electricity gas and other fuel” group contributed by -0.32 p.p.. Prices of “Clothing and footwear” group contributed by - 0.17 p.p.. Prices of “Transport” groups, contributed by -0.04 p.p.. Prices of “Health” and “Communication” group contributed by -0.03 p.p. (see Fig. 2, pg 2)

Yearly rate of main groups: Compared to December 2014, prices increased the most in the group “Food and non-alcoholic beverage” by 5.1 %, followed by “Education services” group by 4.8 %, “Alcoholic drinks and tobacco” by 3.3 %, etc. Within the food group prices of “vegetables include potatoes” are increased by 23.9 %, followed by “fruits” subgroup by 22.7 %, “oil and fat” subgroup by 1.8 %, “sugar, jam and dessert” subgroup by 1.0 %, etc. Meanwhile prices of “milk, cheese and eggs” subgroup are decreased by 5.8 %, followed by “meat” and “coffee and tea” subgroup by 0.8 %, etc. On the other hand prices decreased the most in the “Clothing and footwear” group by 3.2 %, followed by “Housing, water, electricity gas and other fuel” group by 2.0 %, “Communication” group by 1.1 %,

Monthly rate of consumer price is 0.6 %. Compared to November 2015 prices increased the most in “Food and non-alcoholic beverage” group by 1.3 %. Compared with previous month price of diesel was decrease by 1.6 % and price of petrol was decrease by 1.2 %.

Fig.1 Annual rate of consumer price index

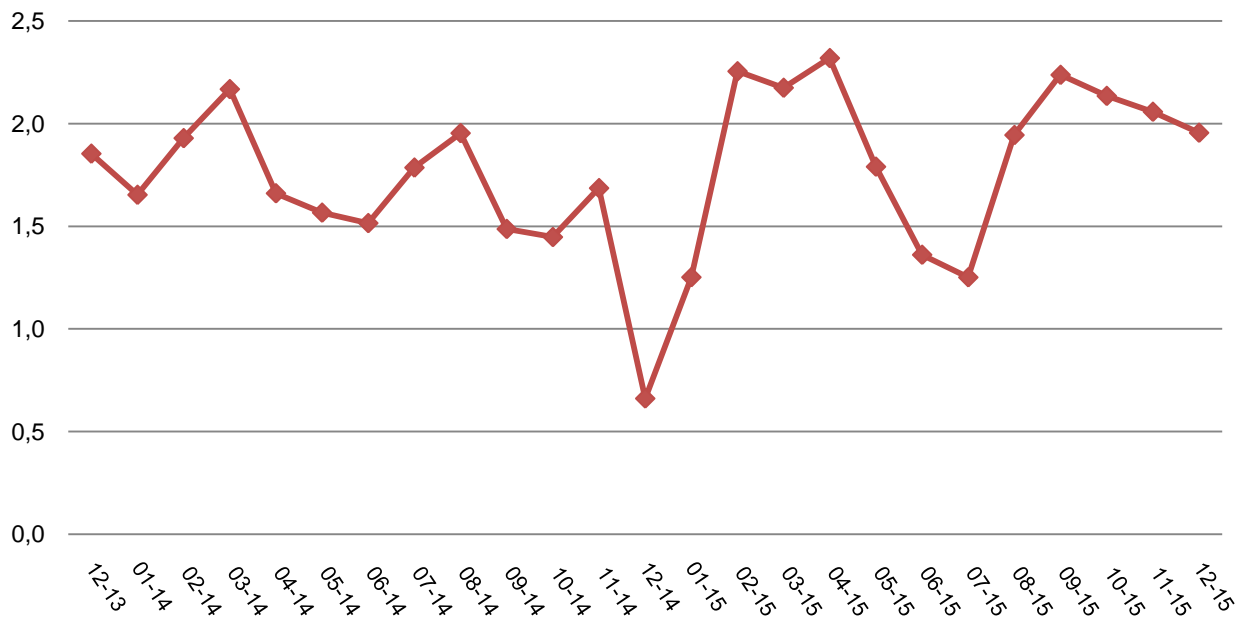
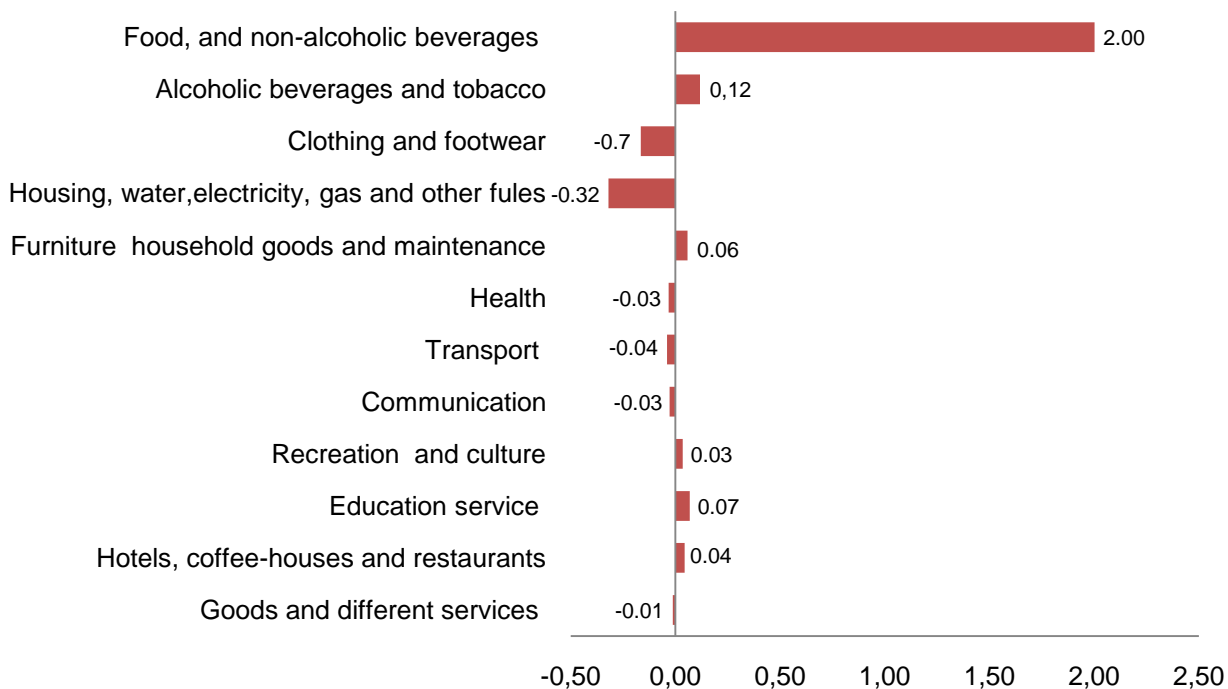


Fig.2 Contribute of main groups in annual rate



Notice: Contribution measure the impact of each expenditure main groups on the total yearly changes of the consumer price index in percent point. The total contribution is equal with yearly changes. For example yearly changes of "Alcoholic beverage and tobacco" group in December 2015 is 3.31 %, their contribution on the yearly changes is 0.12 p.p..

Tab. 1 Consumer Price Index

December 2007=100 %

Code	Groups	Weights	12-14	01-15	02-15	03-15	04-15	05-15	06-15	07-15	08-15	09-15	10-15	11-15	12-15
	Total	100.0	117.0	118.6	121.4	121.9	121.3	119.4	118.1	117.3	118.2	118.9	118.9	118.5	119.3
1	Food, and non-alcoholic beverages	39.3	125.8	129.9	137.0	138.4	137.2	132.2	129.2	127.2	129.7	131.3	131.3	130.5	132.2
2	Alcoholic beverages and tobacco	3.6	143.9	144.6	146.0	146.5	147.3	147.6	148.0	147.5	147.8	147.8	148.0	147.6	148.6
3	Clothing and footwear	5.1	85.7	85.6	84.1	83.5	83.4	83.2	82.8	82.3	81.6	81.7	82.3	82.8	82.9
4	Housing, water, electricity, gas and other fuels	16.3	115.7	115.9	115.8	115.3	113.6	113.5	113.7	113.8	113.8	113.8	113.5	113.4	113.5
5	Furniture household goods and maintenance	10.0	103.1	103.1	102.9	102.9	103.1	103.2	103.1	103.1	103.3	103.1	103.0	103.1	103.7
6	Health	3.4	114.9	115.7	116.6	116.6	117.1	117.1	113.4	113.9	113.9	114.2	114.4	113.9	113.9
7	Transport	6.1	116.6	114.9	115.7	116.8	117.8	118.1	118.6	119.0	118.2	117.2	117.2	115.9	115.9
8	Communication	2.6	83.0	83.0	82.9	82.9	83.0	83.0	83.0	83.0	82.1	82.1	82.1	82.1	82.1
9	Recreation and culture	3.1	114.8	115.0	115.5	115.4	115.4	115.4	115.3	114.8	115.0	116.1	116.4	116.3	116.1
10	Education service	1.4	121.2	121.2	121.2	121.2	121.2	121.2	121.2	121.2	121.7	122.2	127.0	127.0	127.0
11	Hotels, coffee-houses and restaurants	4.2	112.5	112.6	112.6	112.6	112.6	112.6	112.7	112.7	112.8	113.7	113.7	113.6	113.7
12	Goods and different services	4.9	115.7	115.6	115.4	115.3	115.8	115.9	115.8	115.3	115.1	116.2	115.6	115.9	115.4

Tab. 2 Annual rate of CPI

%

Code	Groups	12-14/12-13	01-15/01-14	02-15/02-14	03-15/03-14	04-15/04-14	05-15/05-14	06-15/06-14	07-15/07-14	08-15/08-14	09-15/09-14	10-15/10-14	11-15/11-14	12-15/12-14
	Total	0.7	1.3	2.3	2.2	2.3	1.8	1.4	1.3	1.9	2.2	2.1	2.1	2.0
1	Food, and non-alcoholic beverages	0.4	2.2	4.8	4.7	5.2	3.8	2.7	2.4	4.2	4.9	5.5	5.9	5.1
2	Alcoholic beverages and tobacco	7.1	4.6	6.3	6.3	6.5	6.8	7.0	6.6	6.7	6.9	6.1	3.3	3.3
3	Clothing and footwear	0.1	0.1	-0.2	-0.9	-1.3	-1.2	-1.3	-1.0	-1.6	-2.1	-3.7	-4.0	-3.2
4	Housing, water, Electricity, gas and other fuels	0.5	0.7	0.7	0.3	-1.0	-0.8	-0.4	-0.3	-0.3	-0.2	-1.4	-1.7	-2.0
5	Furniture household goods and maintenance	-0.3	-0.2	-0.5	-0.1	-0.3	-0.1	-0.1	-0.1	-0.1	-0.4	-0.3	0.0	0.6
6	Health	-5.6	-5.2	-4.5	-4.4	-1.5	0.1	-1.9	-0.8	-0.9	-0.6	-0.5	-1.3	-0.9
7	Transport	-1.1	-3.7	-3.3	-2.2	-1.5	-1.4	-1.1	-0.9	-1.9	-2.5	-2.1	-2.8	-0.6
8	Communication	3.9	3.8	3.7	3.7	2.3	2.2	2.2	1.7	0.6	0.0	0.0	-0.8	-1.1
9	Recreation and culture	0.1	0.5	0.7	0.6	0.5	0.5	0.4	0.1	0.2	0.4	1.0	1.0	1.1
10	Education service	11.2	11.0	10.2	10.3	10.1	10.1	10.1	10.1	10.4	10.5	4.8	4.8	4.8
11	Hotels, coffee-houses and restaurants	1.5	1.6	1.4	0.6	0.6	0.5	0.4	0.3	0.5	0.8	0.6	0.7	1.1
12	Goods and different services	3.1	2.9	-1.3	-1.7	-1.1	-1.0	-0.8	-0.7	-0.7	-0.1	-0.6	-0.1	-0.2

Tab. 3 Monthly rate of CPI

		%												
Code	Groups	12-14	01-15	02-15	03-15	04-15	05-15	06-15	07-15	08-15	09-15	10-15	11-15	12-15
	Total	0.7	1.4	2.4	0.4	-0.5	-1.6	-1.1	-0.7	0.8	0.6	0.0	-0.3	0.6
1	Food. and non-alcoholic beverages	2.0	3.3	5.4	1.0	-0.8	-3.6	-2.3	-1.5	2.0	1.2	-0.1	-0.6	1.3
2	Alcoholic beverages and tobacco	0.7	0.5	1.0	0.4	0.5	0.2	0.3	-0.3	0.2	0.0	0.1	-0.2	0.6
3	Clothing and footwear	-0.6	-0.1	-1.7	-0.7	-0.1	-0.3	-0.5	-0.5	-0.9	0.1	0.8	0.5	0.2
4	Housing, water. Electricity, gas and other fuels	0.3	0.1	0.0	-0.5	-1.5	-0.1	0.2	0.0	0.0	0.0	-0.3	0.0	0.0
5	Furniture household goods and maintenance	0.0	0.0	-0.2	0.1	0.1	0.1	-0.1	0.1	0.1	-0.2	-0.1	0.1	0.5
6	Health	-0.4	0.7	0.7	0.0	0.4	0.0	-3.1	0.4	0.0	0.3	0.2	-0.5	0.0
7	Transport	-2.2	-1.5	0.7	1.0	0.8	0.3	0.4	0.4	-0.7	-0.8	0.0	-1.2	0.0
8	Communication	0.3	0.1	-0.1	0.0	0.0	0.0	0.0	0.0	-1.1	0.0	0.0	0.0	0.0
9	Recreation and culture	-0.2	0.2	0.4	-0.1	0.0	0.1	-0.1	-0.4	0.2	0.9	0.2	-0.1	-0.1
10	Education service	0.0	0.0	0.0	0.0	0.0	0.0	0.0	0.0	0.4	0.5	3.9	0.0	0.0
11	Hotels, coffee-houses and restaurants	-0.3	0.0	0.0	0.0	0.0	0.0	0.1	0.0	0.2	0.8	0.0	-0.1	0.1
12	Goods and different services	-0.2	-0.1	-0.2	-0.1	0.5	0.1	-0.1	-0.4	-0.2	0.9	-0.4	0.2	-0.4

Information for the users

CONSUMER PRICE INDEX WITH NEW BASKET

Institute of Statistics inform all users that starting from 10 February 2016 Consumer Price Index will be published with new basket of goods and services.

Currently, INSTAT publishes the Consumer Price Index with weights generated on the results of the Household Budget Survey (HBS) 2006-2007. As base period for calculating the index is considered December 2007 (December 2007 = 100).

Starting from January 2016, INSTAT will publish Consumer Price Index with new basket of goods and services based on results of Household Budget Survey (HBS) 2014.

The new Index will calculate considering December 2015 as a base period. (December 2015=100).

The new Index will cover all territory of Albania

The revised index will continue to be published as total for Albania on the 8th of each month on the Web-page of INSTAT in www.instat.gov.al.

In the Web-page of INSTAT www.instat.gov.al, you will also find all series of the CPI. All previous indexes will be recalculated with the new base (December 2015=100)

Methodology

Consumer Price Index (CPI) is calculated with a new basket of product from December 2007. Weights are based on the results of the Household budget Survey, carried out during October 2006 – September 2007. December 2007 is considered as the base period (December 2007 = 100). Previous change of the product basket was from January 2002, where the number of the products was increased from 221 to 262 products. In the new basket the number of product is 272. The international classification COICOP with 12 main groups was introduced which is totally comparable with the expenditure classification used by EUROSTAT.

The weights are calculate based on the urban and rural household expenditure. The index covers all Albanian (rural and urban) territory. The previous index covered only the urban area. The product weights will be different for each region. Prices are collected in main cities of 11 prefectures were Kukës is within the prefecture of Dibër.

The Consumer Price Index of Albania is a Laspeyres type index:

$$I_{0,i}^t = \frac{\sum_i P_i^t * Q_i^0}{\sum_i P_i^0 * Q_i^0}$$

With weights ($w = P*Q$) from base period this is approximated to:

$$I_{0,i}^t = \sum_i w_i * \left(\frac{P_i^t}{P_i^0} \right)$$

In more detail, a price relative is calculated for each item and region with geometrical mean on the sample of outlets:

$$PR_{t-1,ij}^t = \prod_{k=1}^n \left(\frac{P_{ijk}^t}{P_{ijk}^{t-1}} \right)^{1/n}$$

Monthly chaining gives the price relative from the base period:

$$PR_{0,ij}^t = PR_{0,ij}^1 * \dots * PR_{t-1,ij}^t$$

Regional CPI is calculated:

$$RICKI_{i,0}^t = \sum_i r_{ij} * PR_{0,ij}^t$$

The price relatives are aggregated geographically to form product indices on items for whole Albania:

$$I_{0,i}^t = \sum_j r_{ij} * PR_{0,ij}^t \quad \text{Where: } \sum_j r_{ij} = 1 \quad : \quad \forall_i \text{ (for all cases)}$$

Aggregation over items then gives the CPI of Albania:

$$CPI_0^t = \sum_i w_i * I_{0,i}^t \quad \text{Where: } \sum_i w_i = 1$$

Acronyms

P	price
PR	price relative
I	index
CPI	Consumer Price Index
t	time period t
t=0	base period
r	geographical weights
w	item weights
j	numbering of regions
i	numbering of items

The annual rate measures the price change between the current month and the same month of the previous year. This measure is responsive to recent changes in price levels but can be influenced by one-off effect in either month

The monthly rate measures the price change between current month and previous month. Although up-to-date it can be affected by seasonal and other effects.

The 12-month average rate compares average Consumer Price Indices ant the latest 12 month to the average of the previous 12 months.